



„My favorite:
Curaflex® Konfix^{pro}.“

(see **page 42**)

NEW



„The sealing of flexible
pipes? No problem by using the
Curaflex Nova® Senso!“

(see **page 14**)



DELIVERY PROGRAMME

Edition 01.01.2014

Curaflex Nova[®] Senso

Especially for flexible pre insulated pipe systems.



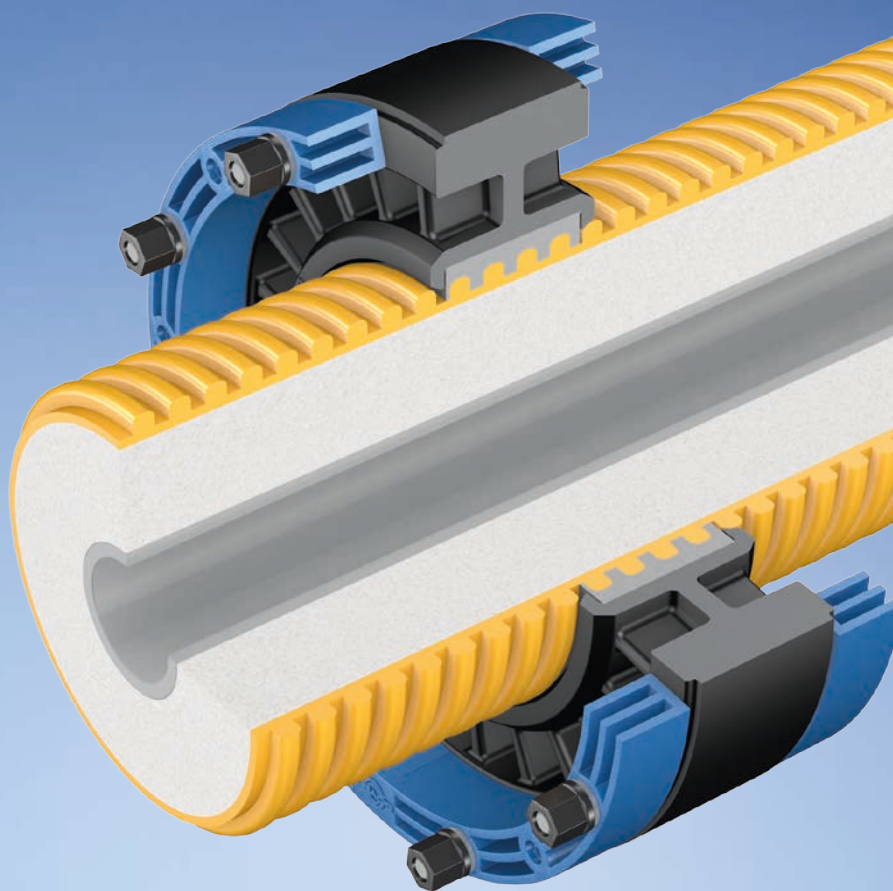
STS | Soft Tight System

Flexible and adaptable. Safe sealing for pipes with structured and sensitive surface.



ITL[®] | Integrated Torque Limiter

Optimum pressure by automatically correct torque guarantees the safe and gentle sealing of the service pipe.



Safety for corrugated pipes:
Curaflex Nova[®] Senso

HEALTH AND SAFETY



Tables of specification

Curaflex® gasket inserts A - F and Curaflex® pipe sleeves

pipe external diameter	ND	X X X
7 - 12	50	012
13 - 18		015
19 - 24		020
7 - 13	80	012
14 - 21		020
22 - 28		025
29 - 35		032
36 - 40	100	040
41 - 45		042
46 - 52		050
53 - 57		056
58 - 67		063
68 - 77		075
78 - 85		125
86 - 94	090	
95 - 104	150	098
105 - 115		110
116 - 124		118
125 - 135	200	125
136 - 145		140
146 - 156		148
157 - 165		160
166 - 172	250	170
173 - 179		175
180 - 186		180
187 - 190		190
191 - 197		300
198 - 207	200	
208 - 215	210	
216 - 224	222	
225 - 233	225	

pipe external diameter	ND	X X X	
234 - 240	350	240	
241 - 249		242	
250 - 259		250	
260 - 269		265	
270 - 278		273	
279 - 288		280	
289 - 294		400*	290
295 - 300	296		
301 - 306	306		
307 - 311	310		
312 - 317	315		
318 - 322	320		
323 - 327	323		
328 - 333	328		
334 - 339	336		
340 - 344	450*		340
345 - 350		350	
351 - 356		355	
357 - 362		362	
363 - 368		368	
369 - 370		370	
371 - 375		375	
376 - 380		380	
381 - 386		500*	386
387 - 392			392
393 - 397	397		
398 - 403	400		
404 - 409	406		
410 - 415	410		
416 - 420	420		
421 - 425	425		
426 - 430	429		

* Specifications do not apply for C 40 and A 40.

Attention!

For pipes > ND 500 part numbers do not exist. please furnish particulars/advise exact measurements.

Standard sealing rubber

EPDM (ethylene propylene diene mixture) DOYMA Grip

DOYMA Grip is a special slip-resistant, resilient elastomeric compound developed by DOYMA. This compound resists friction-reducing substances, for example softening agents, which can cause the gasket insert to slip.

More properties:

- Excellent chemical resistance, resistant to almost all acids and alkalis and salt water
- Suitable for drinking water (KTW recommendation on request)
- High thermal and mechanical load capacities
- Temperature range: from -40 °C to +140 °C (EPDM for sealing inserts Curaflex® C 40 and Curaflex® A 40, Temperature range -40 °C to +100 °C)

Optional sealing rubbers

NBR (nitrile butadiene rubber):

- Chemical resistance to oils, fats and all commercially available fuels
- Excellent sealing in natural and town gas
- Temperature range: from -20 °C to +100 °C

FPM (fluorine rubber):

- Chemical resistance, even against solvents, fuels, natural gas, oil, grease and aviation fuel
- Temperature range: from -10 °C to +200 °C

Silicone (silicone rubber):

- Good resistance to ozone
- Temperature range: from -45 °C to +220 °C

Curaflex® gasket inserts .../S (page 8)

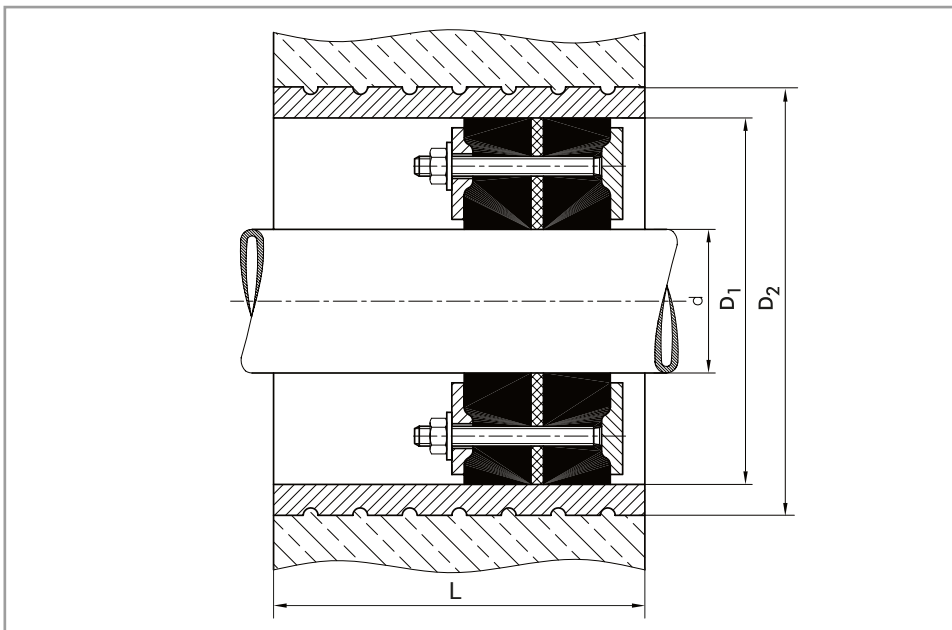
pipe external diameter	ND	Y Y Y
9 - 14	100	012
15 - 21		020
22 - 28		025
29 - 35		032
36 - 40		040
58 - 65	125	063
40 - 48		040
49 - 57	130	050
58 - 67		063
68 - 77		075
58 - 62	150	060
63 - 70		063
71 - 77	160	075
78 - 85		078
86 - 94		090
95 - 104	200	098
78 - 86		078
87 - 95		090
96 - 104	250	098
105 - 114		110
115 - 121		118
122 - 129		125
130 - 136	300	135
137 - 145		140
158 - 168		160
169 - 179	300	170
180 - 190		180

Table of specification

Pipe/ cable diameter d depending on the diameter of the core bores / pipe sleeves D_1 and allowed tolerances of the core bores / pipe sleeves

pipe- / cable- diameter d [mm]*	diameter core bores / pipe sleeve D_1 [ND in mm]	tolerance $\varnothing - \min D_1$ $\varnothing - \max D_1$		max. diameter pipe sleeve D_2 [mm]
1 - 24	50	49	53	-
1 - 40	80	78,5	83	140
41 - 57	100	98,5	104	160
58 - 77	125	123,5	128	156
78 - 104	150	148,5	153	187
105 - 145	200	199	204	238
146 - 190	250	247	253	289
191 - 233	300	297	304	347
234 - 288	350	347	354	395
289 - 339	400	397	404	461
340 - 380	450	447	454	511
381 - 430	500	497	503	570
431 - 530	600	597	603	673
531 - 620	700	697	703	787
621 - 720	800	797	803	897
721 - 820	900	897	903	1007
821 - 920	1000	997	1003	1117
921 - 1020	1100	1096	1102	1230
1021 - 1110	1200	1196	1202	1340
1111 - 1210	1300	1296	1302	1452
1211 - 1310	1400	1396	1402	1564

* with your order please indicate the exact outer diameter of the pipe/ cable as well as the diameter D_1 of the core bore/ pipe sleeve



With your order we need the following information:

- pipe/cable outer diameter d
- core bore inner diameter D_1 or ND
of pipe sleeve

Please ask us, Phone 0049 4207/9166 550

Index of content

Tables of specification	3
Tables of specification	4
Curaflex® Sealing Systems	6
Curaflex® special fibre cement pipe sleeves 3000, 3000/T	6
Curaflex® special fibre cement pipe sleeves 3001, 4006, 4005	7
Curaflex® gasket inserts for pipe sleeves and core bores	
Curaflex® gasket inserts C, A and C/S, A/S, against pressing/non-pressing water	8
Curaflex® gasket inserts C, A in Edelstahl, against pressing/non-pressing water	9
Curaflex Nova® Multi gasket inserts	9
Curaflex® gasket inserts Quick In C / Quick In A, C/0 / A/0	10
Curaflex® gasket inserts C 40 / A 40, MS/C / MS/A	11
Curaflex® gasket inserts C/M / A/M	12
Curaflex® gasket inserts C/M/T / A/M/T and Curaline® Vario	13
NEW Curaflex Nova® Senso gasket inserts	14
Curaflex® gasket inserts C/2/SD/6 and F/2/SD/6, C/2/SD/5 and F/2/SD/5	15
Curaflex® combinations 3300, 3300/T: sealings in front of wall, for constructions without tanking membrane	16
Curaflex® combinations 3100, for constructions without tanking membrane and Curaflex® 3101 for bituminous coating	17
Advices for the application of elastomer packings and bituminous coating	18
Curaflex® combinations 4300, 4100 for constructions with tanking membranes / bituminous coating and hole punch	19
Curaflex® combinations 7300, 7300/T: sealings in front of wall, for constructions with tanking membranes	20
Curaflex® combinations 7100, 7100/T: sealings in front of wall, for constructions with tanking membranes	21
Curaflex® combinations 8300, 8300/T: sealings in front of wall, for constructions without tanking membranes	22
Curaflex® combinations 8100, 8100/T: sealings in front of wall, for constructions without tanking membranes / bituminous coating	23
Curaflex® accessories:	24
<p>The standard Curaflex® gasket inserts comprises asymmetrically profiled* steel rings. The steel rings are electro-galvanized, yellow passivated and sealant coated as standard (ggv). EPDM sealing rubber types are made by "DOYMA-Grip". This material is a special, slip-resistant, resilient elastomeric compound developed by DOYMA. (*DPS: Double profile System up to ND 350) The standard Curaflex® steel sleeves comprises electro-galvanized mild steel, yellow passivated and sealant coated. If doesn't described otherwise prices are valid for standard solutions.</p>	
Modular seals Link-Seal	25
Modular seals Link-Seal: Sealing elements for steel, cast iron and plastic pipes	25
Modular seals Link-Seal: assembled chains for normed steel/ cast iron pipes	26
Modular seals Link-Seal: assembled chains for normed plastic pipes	27
Curaline® cable ducts	28
Curaline® BKD 150 (with bayonet action lock)	28
Curaline® KD 110 (with screw fastening)	29
Curaline® BKD 90 (with bayonet action lock)	30
Curaline® BKD 150 in combination with fixed and loose flange construction	31
Curaline® KSS (cable duct system)	31
Curaline® Vario, Gasket insert with changeable rubber inserts	32
Curaline® GE (earthing for buildings)	32
Curaline® accessories	33
Curaflam® fire protection systems	34
Curaflam® Konfix ^{Pro}	34
Curaflam® Mörtel ^{Pro}	34
Curaflam® Segment SM ^{Pro}	35
Curaflam® collar XS ^{Pro}	36
Curaflam® collar ECO ^{Pro}	37
Curaflam® Rollit and Curaflam® Rollit LAR, fire protection winding tape for flammable and non-flammable Pipes	38
Curaflam® Rollit BBR ^{Pro} , fire protection winding tape for flammable pipes	39
Curaflam® Rollit ISO ^{Pro} , fire protection winding tape for non-flammable insulated pipes	40
Curaflam® Inject BS ^{Pro} , fire protection sealing material for flammable and non-flammable pipes	41
Curaflam® fire protection systems brick, plug, cable filler	42
Curaflam® BSHB, fire protection systems for flammable pipes in combination with gasket inserts	43
Curaflam® BSHN, fire protection systems for non-flammable pipes in combination with gasket inserts	44
Curaflam® 12.500 BSRB / 12.500 BSRN, fire protection for dry rooms for flammable / non-flammable pipes	45
Curaflam® 49.950 BSRB / 49.950 BSRN, fire protection for dry rooms/wet rooms for flammable / non-flammable pipes	46
Designation plates	46
DOYMA: Zertifikate 25 years guarantee	47
General Sales Terms and Conditions	48
Terms of redumption	49

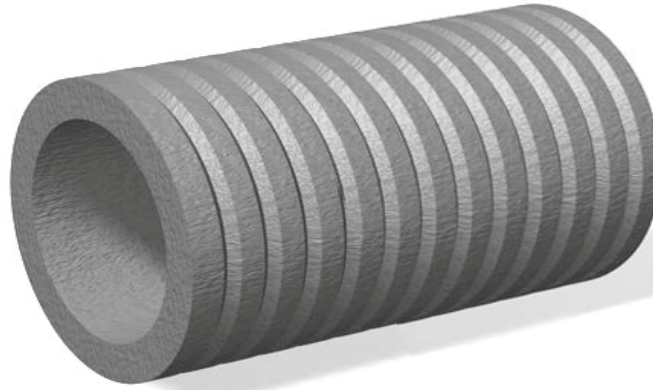
This delivery programme will be valid until another programme is edited.

Technical modifications reserved.

Curaflex® pipe sleeves 3000, special fibre cement pipe sleeve for the installation in the wall / ceiling.

For sealing against pressing and non-pressing water

ND pipe sleeves [mm]	for pipe outer diameter from - to [mm]	part number	Length pipe sleeves: LLL				
			200/240/250	300	350/365/400	500	Length 1000, LLL: 999
			Curaflex® pipe sleeves 3000				
80	1 - 40	1 30 0 080 LLL 0 0					
100	41 - 57	1 30 0 100 LLL 0 0					
125	58 - 77	1 30 0 125 LLL 0 0					
150	78 - 104	1 30 0 150 LLL 0 0					
200	105 - 145	1 30 0 200 LLL 0 0					
250	146 - 190	1 30 0 250 LLL 0 0					
300	191 - 233	1 30 0 300 LLL 0 0					
350	234 - 288	1 30 0 350 LLL 0 0					
400	289 - 339	1 30 0 400 LLL 0 0					
450	340 - 380	1 30 0 450 LLL 0 0					
500	381 - 430	1 30 0 500 LLL 0 0					
600	431 - 530	1 30 0 600 LLL 0 0					
700	531 - 620	1 30 0 700 LLL 0 0					
800	621 - 720	1 30 0 800 LLL 0 0					
900	721 - 820	1 30 0 900 LLL 0 0					
1000	821 - 920	1 30 0 999 LLL 0 0					
1100	921 - 1020	-					
1200	1021 - 1110	-					
1300	1111 - 1210	-					
1400	1211 - 1310	-					



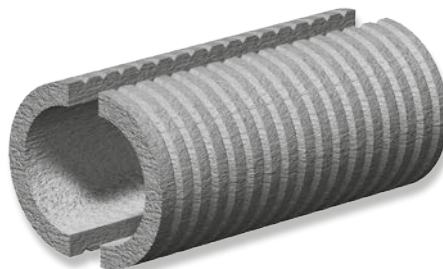
suitable for sealing against pressing and non-pressing water

Curaflex® pipe sleeves 3000/T, special fibre cement pipe sleeve for the installation in the wall / ceiling.

For sealing against pressing and non-pressing water. Split Version

Curaflex® 3000/T, split version

ND pipe sleeves [mm]	for pipe outer diameter from - to [mm]	part number	Length pipe sleeves: LLL			
			200/240/250	300	350/365/400	500
			Curaflex® pipe sleeves 3000/T			
80	1 - 40	1 30 2 080 LLL 0 0				
100	41 - 57	1 30 2 100 LLL 0 0				
125	58 - 77	1 30 2 125 LLL 0 0				
150	78 - 104	1 30 2 150 LLL 0 0				
200	105 - 145	1 30 2 200 LLL 0 0				
250	146 - 190	1 30 2 250 LLL 0 0				
300	191 - 233	1 30 2 300 LLL 0 0				



suitable for sealing against pressing and non-pressing water

Concrete adhesive for bonding of the pipe sleeve parts see page 24.

Other dimensions on request. We will gladly advise you: Phone 0049 4207/9166 550

Curaflex® pipe sleeves 3001, special fibre cement pipe sleeve with fibre cement flange, for thick bituminous coating according to DIN 18195 T9. For sealing against non-pressing water



Curaflex® 3001

ND pipe sleeves [mm]	for pipe outer diameter from - to [mm]	Length pipe sleeves: 415 mm part number
80	1 - 40	1 30 0 080 415 0 9
100	1 - 57	1 30 0 100 415 0 9
125	58 - 77	1 30 0 125 415 0 9
150	78 - 104	1 30 0 150 415 0 9
200	105 - 145	1 30 0 200 415 0 9
250	146 - 190	1 30 0 250 415 0 9
300	191 - 233	1 30 0 300 415 0 9

Curaflex® pipe sleeves 4006, special fibre cement pipe sleeve with fix and loose flange of iron cast. For constructions with tanking membranes / thick bituminous coating according to DIN 18195 T9 (see remarks on page 18).

Curaflex® 4006

ND pipe sleeves	for pipe outer diameter from - to	part number	Length pipe sleeves: LLL				Acc. for thick bitum. coating part number	Elastomer packings (2 pcs.)* part number
			200/240/250	300	350/365/400	500		
Curaflex® pipe sleeves 4006								
80	1 - 40	1 40 6 080 LLL 0 0	<p>suitable for sealing against pressing water</p>				1 99 6 776 080 4 0	1 99 6 775 080 4 0
100	41 - 57	1 40 6 100 LLL 0 0					1 99 6 776 100 4 0	1 99 6 775 100 4 0
125	58 - 77	1 40 6 125 LLL 0 0					1 99 6 776 125 4 0	1 99 6 775 125 4 0
150	78 - 104	1 40 6 150 LLL 0 0					1 99 6 776 150 4 0	1 99 6 775 150 4 0
200	105 - 145	1 40 6 200 LLL 0 0					1 99 6 776 200 4 0	1 99 6 775 200 4 0
250	146 - 190	1 40 6 250 LLL 0 0					1 99 6 776 250 4 0	1 99 6 775 250 4 0
300	191 - 233	1 40 6 300 LLL 0 0					1 99 6 776 300 4 0	1 99 6 775 300 4 0

Curaflex® pipe sleeves 4005, special fibre cement pipe sleeve with fix and loose flange of iron cast. For constructions with tanking membranes / thick bituminous coating according to DIN 18195 T9 (see remarks on page 18).

Curaflex® 4005

ND pipe sleeves	for pipe outer diameter from - to	part number	Length pipe sleeves: LLL				Acc. for thick bitum. coating part number	Elastomer packings (2 pcs.)* part number
			200/240/250	300	350/365/400	500		
Curaflex® pipe sleeves 4005								
80	1 - 40	1 40 5 080 LLL 0 0	<p>suitable for sealing against non-pressing water</p>				1 99 5 776 080 4 0	1 99 5 775 080 4 0
100	41 - 57	1 40 5 100 LLL 0 0					1 99 5 776 100 4 0	1 99 5 775 100 4 0
125	58 - 77	1 40 5 125 LLL 0 0					1 99 5 776 125 4 0	1 99 5 775 125 4 0
150	78 - 104	1 40 5 150 LLL 0 0					1 99 5 776 150 4 0	1 99 5 775 150 4 0
200	105 - 145	1 40 5 200 LLL 0 0					1 99 5 776 200 4 0	1 99 5 775 200 4 0
250	146 - 190	1 40 5 250 LLL 0 0					1 99 5 776 250 4 0	1 99 5 775 250 4 0
300	191 - 233	1 40 5 300 LLL 0 0					1 99 5 776 300 4 0	1 99 5 775 300 4 0

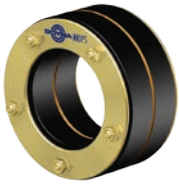
*) information see page 18

Punch hole for thick coatings see page 19

Please ask us, phone: 0049 4207/9166 550

Curaflex® gasket inserts C and A with DPS* for pipe sleeves and core bores

Material: galvanized



Curaflex® C
against pressing water



Curaflex® A
against non-pressing water

Curaflex® C

ND pipe sleeves/ Core bores [mm]	for pipe outer diameter from - to [mm]	part number
50	7 - 24	1 03 0 xxx 050 0 0
80	7 - 40	1 03 0 xxx 080 0 0
100	41 - 57	1 03 0 xxx 100 0 0
125	58 - 77	1 03 0 xxx 125 0 0
150	78 - 104	1 03 0 xxx 150 0 0
200	105 - 145	1 03 0 xxx 200 0 0
250	146 - 190	1 03 0 xxx 250 0 0
300	191 - 233	1 03 0 xxx 300 0 0
350	234 - 288	1 03 0 xxx 350 0 0
400	289 - 339	1 03 0 xxx 400 0 0
450	340 - 380	1 03 0 xxx 450 0 0
500	381 - 430	1 03 0 xxx 500 0 0
600	431 - 530	-

Curaflex® A

ND pipe sleeves/ Core bores [mm]	for pipe outer diameter from - to [mm]	part number
50	7 - 24	1 01 0 xxx 050 0 0
80	7 - 40	1 01 0 xxx 080 0 0
100	41 - 57	1 01 0 xxx 100 0 0
125	58 - 77	1 01 0 xxx 125 0 0
150	78 - 104	1 01 0 xxx 150 0 0
200	105 - 145	1 01 0 xxx 200 0 0
250	146 - 190	1 01 0 xxx 250 0 0
300	191 - 233	1 01 0 xxx 300 0 0
350	234 - 288	1 01 0 xxx 350 0 0
400	289 - 339	1 01 0 xxx 400 0 0
450	340 - 380	1 01 0 xxx 450 0 0
500	381 - 430	1 01 0 xxx 500 0 0
600	431 - 530	-

*) DPS up to ND 350

xxx see page 3

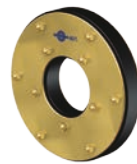
xxx see page 3

Other dimensions on request. We will gladly advise you: Phone: 0049 4207/9166 550

Curaflex® gasket inserts C/S and A/S with DPS* for pipe sleeves and core bores with anomalous dimensions



Curaflex® C/S
against pressing water



Curaflex® A/S
against non-pressing water

Curaflex® C/S

ND pipe sleeves/ Core bores [mm]	for pipe outer diameter from - to [mm]	part number
100	9 - 40	1 03 0 yyy 100 0 0
	58 - 65	1 03 0 yyy 100 0 0
125	40 - 57	1 03 0 yyy 125 0 0
130	58 - 77	1 03 0 yyy 130 0 0
150	58 - 77	1 03 0 yyy 150 0 0
160	78 - 104	1 03 0 yyy 160 0 0
200	78 - 104	1 03 0 yyy 200 0 0
250	105 - 145	1 03 0 yyy 250 0 0
300	158 - 190	1 03 0 yyy 300 0 0

Curaflex® A/S

ND pipe sleeves/ Core bores [mm]	for pipe outer diameter from - to [mm]	part number
100	9 - 40	1 01 0 yyy 100 0 0
	58 - 65	1 01 0 yyy 100 0 0
125	40 - 57	1 01 0 yyy 125 0 0
130	58 - 77	1 01 0 yyy 130 0 0
150	58 - 77	1 01 0 yyy 150 0 0
160	78 - 104	1 01 0 yyy 160 0 0
200	78 - 104	1 01 0 yyy 200 0 0
250	105 - 145	1 01 0 yyy 250 0 0
300	158 - 190	1 01 0 yyy 300 0 0

*) DPS up to ND 350

yyy see page 3

Do you need other rubber materials? Please take a look on page 3.

Curaflex® gasket inserts C and A with DPS* for pipe sleeves and core bores

material: stainless steel 304 - 1.4301 or 316 - 1.4571/1.4404



Curaflex® C
against pressing water



Curaflex® A
against non-pressing water

Curaflex® C

ND pipe sleeves/ Core bores	pipe outer diameter from - to	part number 1.4301 (V2A)	part number 1.4571/1.4404 (V4A)
50	7 - 24	1 03 0 xxx 050 2 0	1 03 0 xxx 050 4 0
80	7 - 40	1 03 0 xxx 080 2 0	1 03 0 xxx 080 4 0
100	41 - 57	1 03 0 xxx 100 2 0	1 03 0 xxx 100 4 0
125	58 - 77	1 03 0 xxx 125 2 0	1 03 0 xxx 125 4 0
150	78 - 104	1 03 0 xxx 150 2 0	1 03 0 xxx 150 4 0
200	105 - 145	1 03 0 xxx 200 2 0	1 03 0 xxx 200 4 0
250	146 - 190	1 03 0 xxx 250 2 0	1 03 0 xxx 250 4 0
300	191 - 233	1 03 0 xxx 300 2 0	1 03 0 xxx 300 4 0
350	234 - 288	1 03 0 xxx 350 2 0	1 03 0 xxx 350 4 0
400	289 - 339	1 03 0 xxx 400 2 0	1 03 0 xxx 400 4 0
450	340 - 380	1 03 0 xxx 450 2 0	1 03 0 xxx 450 4 0
500	381 - 430	1 03 0 xxx 500 2 0	1 03 0 xxx 500 4 0
600	431 - 530	-	-

*) DPS up to ND 350 xxx see page 3

Curaflex® A

ND pipe sleeves/ Core bores	pipe outer diameter from - to	part number 1.4301 (V2A)	part number 1.4571/1.4404 (V4A)
50	7 - 24	1 01 0 xxx 050 2 0	1 01 0 xxx 050 4 0
80	7 - 40	1 01 0 xxx 080 2 0	1 01 0 xxx 080 4 0
100	41 - 57	1 01 0 xxx 100 2 0	1 01 0 xxx 100 4 0
125	58 - 77	1 01 0 xxx 125 2 0	1 01 0 xxx 125 4 0
150	78 - 104	1 01 0 xxx 150 2 0	1 01 0 xxx 150 4 0
200	105 - 145	1 01 0 xxx 200 2 0	1 01 0 xxx 200 4 0
250	146 - 190	1 01 0 xxx 250 2 0	1 01 0 xxx 250 4 0
300	191 - 233	1 01 0 xxx 300 2 0	1 01 0 xxx 300 4 0
350	234 - 288	1 01 0 xxx 350 2 0	1 01 0 xxx 350 4 0
400	289 - 339	1 01 0 xxx 400 2 0	1 01 0 xxx 400 4 0
450	340 - 380	1 01 0 xxx 450 2 0	1 01 0 xxx 450 4 0
500	381 - 430	1 01 0 xxx 500 2 0	1 01 0 xxx 500 4 0
600	431 - 530	-	-

xxx see page 3

Curaflex Nova® Multi. Gasket insert for pipe sleeves and core bores

with ITL, DDE and DPS



Curaflex Nova® Multi

product	ND pipe sleeves/ core bores [mm]	for pipe outer diameter from - to [mm]	part number
Curaflex Nova® Multi ND 100	100	20 - 63	1 88 0 000 100 4 0
Curaflex Nova® Multi ND 200	200	108 - 160	1 88 0 000 200 4 0
4 stabilising lugs with bolts	-	-	1 88 0 600 004 2 9

Curaflex® gasket inserts with large ring.



Curaflex® D
against pressing water



Curaflex® B
against non-pressing water



Curaflex® F
against pressing water

Price for Curaflex®- gasket inserts with large ring on request:
Fon: 0049 4207/9166-550

Do you need other rubber materials? Please take a look on page 3.

Curaflex® gasket inserts Quick In C and Quick In A with DPS* hinged, for retrofit installation, material: galvanized



Curaflex® Quick In C
against pressing water

Curaflex® Quick In C

ND pipe sleeves/ Core bores [mm]	for pipe outer diameter from - to [mm]	part number Mat.: galv.
50	7 - 24	1 03 2 xxx 050 0 0
80	7 - 40	1 03 2 xxx 080 0 0
100	41 - 57	1 03 2 xxx 100 0 0
125	58 - 77	1 03 2 xxx 125 0 0
150	78 - 104	1 03 2 xxx 150 0 0
200	105 - 145	1 03 2 xxx 200 0 0
250	146 - 190	1 03 2 xxx 250 0 0
300	191 - 233	1 03 2 xxx 300 0 0
350	234 - 288	1 03 2 xxx 350 0 0
400	289 - 339	1 03 2 xxx 400 0 0
450	340 - 380	1 03 2 xxx 450 0 0
500	381 - 430	1 03 2 xxx 500 0 0

*) DPS up to ND 350

xxx see page 3



Curaflex® Quick In A
against non-pressing water

Curaflex® Quick In A

ND pipe sleeves/ Core bores [mm]	for pipe outer diameter from - to [mm]	part number Mat.: galv.
50	7 - 24	1 01 2 xxx 050 0 0
80	7 - 40	1 01 2 xxx 080 0 0
100	41 - 57	1 01 2 xxx 100 0 0
125	58 - 77	1 01 2 xxx 125 0 0
150	78 - 104	1 01 2 xxx 150 0 0
200	105 - 145	1 01 2 xxx 200 0 0
250	146 - 190	1 01 2 xxx 250 0 0
300	191 - 233	1 01 2 xxx 300 0 0
350	234 - 288	1 01 2 xxx 350 0 0
400	289 - 339	1 01 2 xxx 400 0 0
450	340 - 380	1 01 2 xxx 450 0 0
500	381 - 430	1 01 2 xxx 500 0 0

xxx see page 3

Curaflex® Gasket inserts C/O and A/O (Blind-Gasket inserts) with DPS* for unused pipe sleeves or core bores, material: galvanized



Curaflex® C/O
against pressing water

Curaflex® C/O

ND pipe sleeves/ Core bores [mm]	part number Mat.: galv.
50	1 03 0 000 050 0 0
80	1 03 0 000 080 0 0
100	1 03 0 000 100 0 0
125	1 03 0 000 125 0 0
150	1 03 0 000 150 0 0
200	1 03 0 000 200 0 0
250	1 03 0 000 250 0 0
300	1 03 0 000 300 0 0
350	1 03 0 000 350 0 0
400	1 03 0 000 400 0 0
450	1 03 0 000 450 0 0
500	1 03 0 000 500 0 0



Curaflex® A/O
against non-pressing water

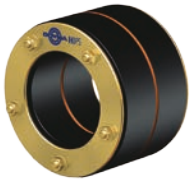
Curaflex® A/O

ND pipe sleeves/ Core bores [mm]	part number Mat.: galv.
50	1 01 0 000 050 0 0
80	1 01 0 000 080 0 0
100	1 01 0 000 100 0 0
125	1 01 0 000 125 0 0
150	1 01 0 000 150 0 0
200	1 01 0 000 200 0 0
250	1 01 0 000 250 0 0
300	1 01 0 000 300 0 0
350	1 01 0 000 350 0 0
400	1 01 0 000 400 0 0
450	1 01 0 000 450 0 0
500	1 01 0 000 500 0 0

Other dimensions on request. We will gladly advise you: Phone: 0049 4207/9166 550

Curaflex® gasket inserts C 40 and A 40 with DPS*

for smooth medium pipe surfaces with 40 mm EPDM seal rings, material: galvanized



Curaflex® C 40
against pressing water



Curaflex® A 40
against non-pressing water

Curaflex® C 40

ND pipe sleeves/ Core bores [mm]	for pipe outer diameter from - to [mm]	part number Mat.: galv.
125	58 - 77	1 03 4 xxx 125 0 0
150	78 - 104	1 03 4 xxx 150 0 0
200	105 - 145	1 03 4 xxx 200 0 0
250	146 - 190	1 03 4 xxx 250 0 0
300	191 - 233	1 03 4 xxx 300 0 0
350	234 - 288	1 03 4 xxx 350 0 0
400	289 - 339	-
450	340 - 380	-
500	381 - 430	-

Curaflex® A 40

ND pipe sleeves/ Core bores [mm]	for pipe outer diameter from - to [mm]	part number Mat.: galv.
125	58 - 77	1 01 4 xxx 125 0 0
150	78 - 104	1 01 4 xxx 150 0 0
200	105 - 145	1 01 4 xxx 200 0 0
250	146 - 190	1 01 4 xxx 250 0 0
300	191 - 233	1 01 4 xxx 300 0 0
350	234 - 288	1 01 4 xxx 350 0 0
400	289 - 339	-
450	340 - 380	-
500	381 - 430	-

*) DPS up to ND 350

xxx see page 3

xxx see page 3

The Curaflex® gasket inserts C 40 bzw. A 40 have 40 mm wide EPDM rubber seals. By the extra wide, soft elastomeric seals, the sealing on the service line is done very gently. These gasket inserts are ideal for the sealing of plastic jacket pipes.

Curaflex® gasket inserts MS/C and MS/A with DPS*

for flexible cables or middle voltage cables



Curaflex® MS/C
against pressing water



Curaflex® MS/A
against non-pressing water

Curaflex® MS/C

ND pipe sleeves/ Core bores [mm]	for pipe outer diameter from - to [mm]	part number Mat.: galv.
100	20 - 39	1 03 3 032 100 0 0
	40 - 50	1 03 3 050 100 0 0
125	40 - 50	1 03 3 050 125 0 0
150	51 - 95	1 03 3 090 150 0 0
200	96 - 147	1 03 3 110 200 0 0
250	96 - 150	1 03 3 110 250 0 0
300	151 - 204	1 03 3 200 300 0 0
400	205 - 290	1 03 3 250 400 0 0

Curaflex® MS/A

ND pipe sleeves/ Core bores [mm]	for pipe outer diameter from - to [mm]	part number Mat.: galv.
100	20 - 39	1 01 3 032 100 0 0
	40 - 50	1 01 3 050 100 0 0
125	40 - 50	1 01 3 050 125 0 0
150	51 - 95	1 01 3 090 150 0 0
200	96 - 147	1 01 3 110 200 0 0
250	96 - 150	1 01 3 110 250 0 0
300	151 - 204	1 01 3 200 300 0 0
400	205 - 290	1 01 3 250 400 0 0

*) DPS up to ND 350

Curaflex® gasket inserts MS/C against pressing water and MS/A against non-pressing water are designed for gentle sealing of flexible cables or middle voltage cables.

A cable duct runs through a pipe sleeve or core bore and is sealed by a gasket insert type MS/C or MS/A. The cable itself runs through the cable duct which passes through a wall or ceiling. Outside the wall cable duct and cable are sealed against each other with a heat shrink sleeve.

Do you have any questions? We will gladly advise you: Phone: 0049 4207/9166 550

Curaflex® gasket inserts C/M and A/M with DPS, for several pipes/cables



Curaflex® C/M, against pressing water



Curaflex® A/M, against non-pressing water

No part number

pipe-/cable diameter d [mm]	Number of pipes/cables	ND of pipe sleeves/ core bores D [mm]
1 - 14	1 - 2	50
1 - 26	1 - 2	80
1 - 23	1 - 3	
1 - 24	1 - 4	
1 - 16	1 - 7	
1 x 4 - 32 1 x 1 - 14	1 - 2	
4 x 4 - 28 1 x 1 - 12	1 - 5	100
1 - 21	1 - 7	
4 - 37	1 - 2	
4 - 33	1 - 3	
1 x 4 - 46 1 x 1 - 16	1 - 2	125
4 - 36	1 - 4	
2 x 4 - 34 2 x 4 - 42	1 - 4	
4 - 28	1 - 7	
4 - 41	1 - 3	150
2 x 23 - 51 2 x 8 - 36	1 - 4	
2 x 30 - 58 2 x 13 - 41	1 - 4	
4 x 22 - 50 1 x 4 - 16	1 - 5	
1 - 20	1 - 13	
6 x 8 - 36 2 x 4 - 16	1 - 8	200
43 - 71	1 - 3	
5 x 23 - 51 1 x 4 - 31	1 - 6	
2 x 28 - 56 2 x 54 - 82	1 - 4	
40 - 69	1 - 4	
4 - 36	1 - 10	
4 - 26	1 - 15	
8 x 13 - 41 4 x 4 - 30	1 - 12	
4 - 26	1 - 20	
12 - 40	1 - 8	
10 x 16 - 44 5 x 4 - 36	1 - 15	250

Other dimensions, other types of rubber on request: Phone: 0049 4207/9166-550
In case of order please advise quantity and the exact outer diameters of the pipes/ cables.

Split Curaflex® gasket inserts C/M/T and A/M/T for several pipes/cables

No part number



Curaflex® C/M/T, against pressing water



Curaflex® A/M/T, against non-pressing water

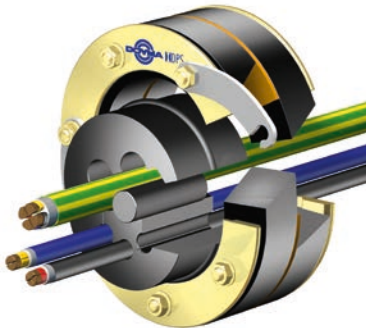
pipe-/cable diameter d [mm]	Number of pipes/cables	ND of pipe sleeve/ core bore D [mm]
1 - 21	1 - 3	80
4 - 37	1 - 2	100
4 - 26	1 - 4	
1 x 18 - 36 2 x 8 - 16	1 - 3	
1 x 8 - 22 4 x 8 - 16	1 - 5	125
4 - 32	1 - 4	
25 - 41	1 - 3	150
2 x 2 - 46 2 x 2 - 36	1 - 4	
15 - 31	1 - 9	200

Other dimensions on request: phone: 0049 4207/9166-550

Curaflex®

Curaline® Vario, gasket insert with changeable rubber inserts

No part number



Curaline® Vario

Curaline® Vario
metal parts: galvanized ¹⁾ , inox 304 or inox 316
ND 100 z. B. for 3 x 5 - 22 mm
5 x 5 - 17 mm
9 x 5 - 12 mm
Rubber insert only: type CLV 200 core
metal parts: galvanized ¹⁾ , inox 304 or inox 316
ND 125 z. B. for 3 x 5 - 30 mm
5 x 5 - 24 mm
9 x 5 - 16 mm
Rubber insert only: type CLV 200 core
metal parts: galvanized ¹⁾ , inox 304 or inox 316
ND 150 z. B. for 3 x 5 - 42 mm
5 x 5 - 34 mm
9 x 5 - 24 mm
Rubber insert only: type CLV 200 core
metal parts: galvanized ¹⁾ , inox 304 or inox 316
ND 200 z. B. for 3 x 5 - 50 mm
6 x 5 - 40 mm
8 x 5 - 30 mm and 1 x 5 - 40 mm
Rubber insert only: type CLV 200 core

Other dimensions on request:
phone: 0049 4207/9166-550

In case of order please advise
quantity and the exact outer
diameters of the pipes/ cables.

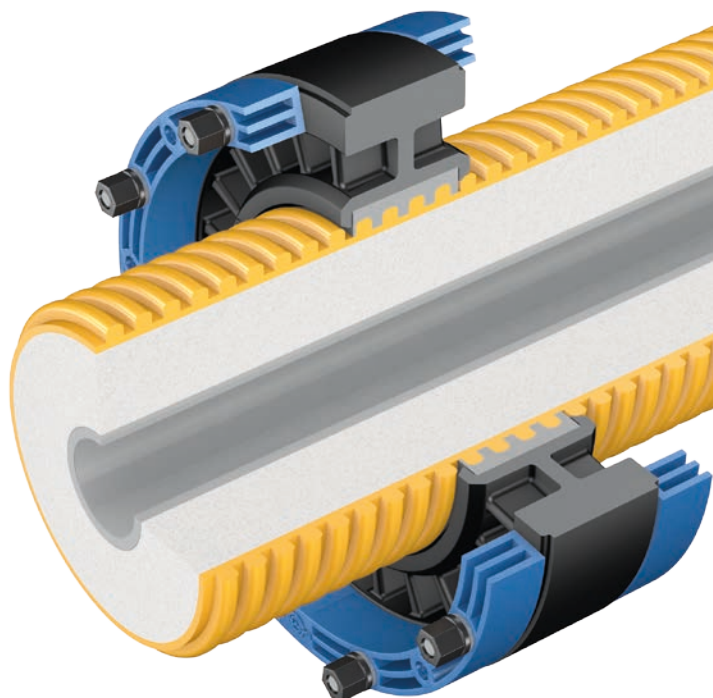
1) galvanized: electro-galvanized mild steel, yellow passivated and sealant coated

Curaflex Nova[®] Senso

Gasket insert for flexible, pre-insulated pipe systems



Curaflex[®]



STS Soft Tight System

Flexible and adaptable. Safe sealing for pipes with structured and sensitive surface.

Advantages:

- The ITL-principle always guarantees the optimal contact pressure – without need of a torque wrench
- With STS for a gentle sealing, ideal for plastic jacket pipes and flexible ductwork for cables
- Easy installation with precisely fitting dimensions
- durably water tight with no re-tensioning (maintenance free)
- higher sealing performance of the gasket insert with DPS and DOYMA-Grip

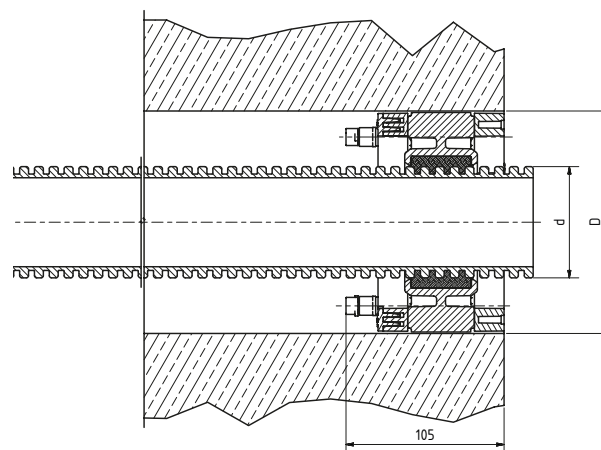
Technical details:

- gastight
- accepts angular deviations of service duct up to 8°
- 45 mm sealing width
- ND 150 for pipes with outer diameter 75, 90 mm
- ND 200 for pipes with outer diameter 110, 125, 140, 160 mm

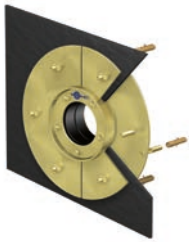
Characteristics of the gasket insert:

- Blue frame rings made of special high performance plastic and 45 mm large EPDM (DOYMA-Grip) rubber seals
- ITL (Integrated torque limiter) shear nuts
- STS (Soft tight system) for a gentle sealing
- Stainless steel screws

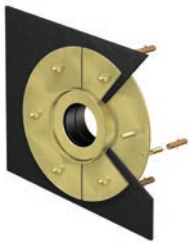
ND pipe sleeves/ Core bores D [mm]	AD pipe d [mm]	for pipe outer diameter from - to [mm]	part number
150 (149 - 153 mm)	75	74 - 76	1 84 0 075 150 4 0
	90	89 - 91	1 84 0 090 150 4 0
200 (199 - 203 mm)	110	109 - 111	1 84 0 110 200 4 0
	125	124 - 126	1 84 0 125 200 4 0
	140	139 - 141	1 84 0 140 200 4 0
	160	159 - 161	1 84 0 160 200 4 0



Curaflex® gasket inserts C/2/SD/6, C/2/SD/5 and F/2/SD/6, F/2/SD/5 with DPS* for constructions with tanking members or thick bituminous coating (see page 18), material: galvanized



Curaflex® C/2/SD/6 against pressing water

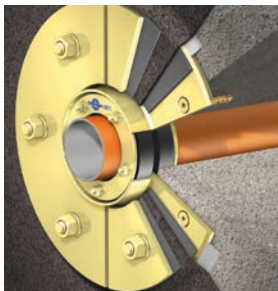


Curaflex® F/2/SD/6 against pressing water

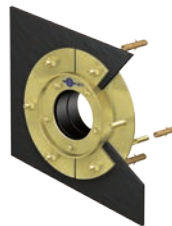
ND pipe sleeves/ Core bores [mm]	for pipe outer diameter from - to [mm]	Curaflex® C/2/SD/6	Curaflex® F/2/SD/6	Elastomer packings**
		part number (galvanized ¹⁾)		part number
80	1 - 40	1 03 6 xxx 080 0 0	1 06 6 xxx 080 0 0	1 99 6 775 080 2 0
100	41 - 57	1 03 6 xxx 100 0 0	1 06 6 xxx 100 0 0	1 99 6 775 100 2 0
125	58 - 77	1 03 6 xxx 125 0 0	1 06 6 xxx 125 0 0	1 99 6 775 125 2 0
150	78 - 104	1 03 6 xxx 150 0 0	1 06 6 xxx 150 0 0	1 99 6 775 150 2 0
200	105 - 145	1 03 6 xxx 200 0 0	1 06 6 xxx 200 0 0	1 99 6 775 200 2 0
250	146 - 190	1 03 6 xxx 250 0 0	1 06 6 xxx 250 0 0	1 99 6 775 250 2 0
300	191 - 233	1 03 6 xxx 300 0 0	1 06 6 xxx 300 0 0	1 99 6 775 300 2 0
350	234 - 288	1 03 6 xxx 350 0 0	1 06 6 xxx 350 0 0	1 99 6 775 350 2 0
400	289 - 339	1 03 6 xxx 400 0 0	1 06 6 xxx 400 0 0	1 99 6 775 400 2 0
450	340 - 380	1 03 6 xxx 450 0 0	1 06 6 xxx 450 0 0	1 99 6 775 450 2 0
500	381 - 430	1 03 6 xxx 500 0 0	1 06 6 xxx 500 0 0	1 99 6 775 500 2 0
600	431 - 530	-	-	-
700	531 - 620	-	-	-

*) DPS up to ND 350

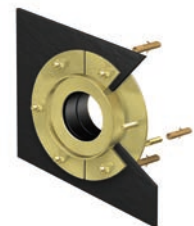
xxx see page 3



example of installation Curaflex® C/2/SD/6 in the wall with elastomer packings and tanking membranes



Curaflex® C/2/SD/5 against non-pressing water



Curaflex® F/2/SD/5 against non-pressing water

Curaflex® gasket inserts C (F)/2/SD/5 for tanking membranes (without course surface) and for thick bituminous coating (course surface)

ND pipe sleeves/ Core bores [mm]	for pipe outer diameter from - to [mm]	Curaflex® C/2/SD/5	Curaflex® F/2/SD/5	course surface for thick bituminous coating**		Elastomer packings**
		part number (galvanized ¹⁾)		Curaflex® C/2/SD/5	Curaflex® F/2/SD/5	part number
80	1 - 40	1 03 5 xxx 080 0 0	1 06 5 xxx 080 0 0	1 03 5 xxx 080 5 0	1 06 5 xxx 080 5 0	1 99 5 775 080 2 0
100	41 - 57	1 03 5 xxx 100 0 0	1 06 5 xxx 100 0 0	1 03 5 xxx 100 5 0	1 06 5 xxx 100 5 0	1 99 5 775 100 2 0
125	58 - 77	1 03 5 xxx 125 0 0	1 06 5 xxx 125 0 0	1 03 5 xxx 125 5 0	1 06 5 xxx 125 5 0	1 99 5 775 125 2 0
150	78 - 104	1 03 5 xxx 150 0 0	1 06 5 xxx 150 0 0	1 03 5 xxx 150 5 0	1 06 5 xxx 150 5 0	1 99 5 775 150 2 0
200	105 - 145	1 03 5 xxx 200 0 0	1 06 5 xxx 200 0 0	1 03 5 xxx 200 5 0	1 06 5 xxx 200 5 0	1 99 5 775 200 2 0
250	146 - 190	1 03 5 xxx 250 0 0	1 06 5 xxx 250 0 0	1 03 5 xxx 250 5 0	1 06 5 xxx 250 5 0	1 99 5 775 250 2 0
300	191 - 233	1 03 5 xxx 300 0 0	1 03 5 xxx 300 0 0	1 03 5 xxx 300 5 0	1 06 5 xxx 300 5 0	1 99 5 775 300 2 0
350	234 - 288	1 03 5 xxx 350 0 0	1 06 5 xxx 350 0 0	1 03 5 xxx 350 5 0	1 06 5 xxx 350 5 0	1 99 5 775 350 2 0
400	289 - 339	1 03 5 xxx 400 0 0	1 06 5 xxx 400 0 0	1 03 5 xxx 400 5 0	1 06 5 xxx 400 5 0	1 99 5 775 400 2 0
450	340 - 380	1 03 5 xxx 450 0 0	1 06 5 xxx 450 0 0	1 03 5 xxx 450 5 0	1 06 5 xxx 450 5 0	1 99 5 775 450 2 0
500	381 - 430	1 03 5 xxx 500 0 0	1 06 5 xxx 500 0 0	1 03 5 xxx 500 5 0	1 06 5 xxx 500 5 0	1 99 5 775 500 2 0

*) DPS up to ND 350

xxx see page 3

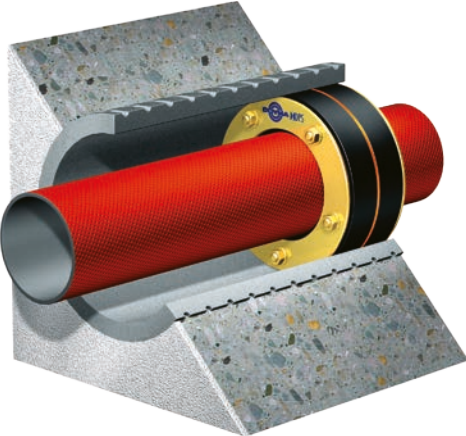
***) information see page 18

Do you need other sealing rubber types? Please take a look on page 3.

Hole punch for thick coatings see page 19

Curaflex® combinations 3300 and 3300/T (pipe sleeves 3000 and gasket insert C resp. Quick In C with DPS*); for construction without tanking membranes

Curaflex®

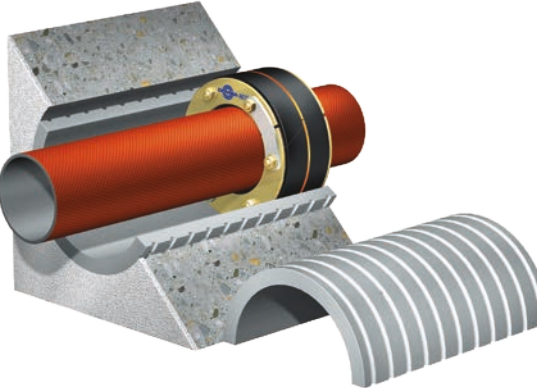
ND pipe sleeves [mm]	for pipe outer diameter from - to [mm]	part number	Length pipe sleeves: LLL			
			200/240/250	300	350/365/400	500
Curaflex® 3300						
80	1 - 40	1 33 0 xxx LLL 0 0				
100	41 - 57	1 33 0 xxx LLL 0 0				
125	58 - 77	1 33 0 xxx LLL 0 0				
150	78 - 104	1 33 0 xxx LLL 0 0				
200	105 - 145	1 33 0 xxx LLL 0 0				
250	146 - 190	1 33 0 xxx LLL 0 0				
300	191 - 233	1 33 0 xxx LLL 0 0				
350	234 - 288	1 33 0 xxx LLL 0 0				
400	289 - 339	1 33 0 xxx LLL 0 0				
450	340 - 380	1 33 0 xxx LLL 0 0				
500	381 - 430	1 33 0 xxx LLL 0 0				

sealing against pressing water

*) DPS up to ND 350

xxx see page 3

Curaflex® 3300/T

ND pipe sleeves [mm]	for pipe outer diameter from - to [mm]	part number	Length pipe sleeves: LLL			
			200/240/250	300	350/365/400	500
Curaflex® 3300/T						
80	1 - 40	1 33 2 xxx LLL 0 0				
100	41 - 57	1 33 2 xxx LLL 0 0				
125	58 - 77	1 33 2 xxx LLL 0 0				
150	78 - 104	1 33 2 xxx LLL 0 0				
200	105 - 145	1 33 2 xxx LLL 0 0				
250	146 - 190	1 33 2 xxx LLL 0 0				
300	191 - 233	1 33 2 xxx LLL 0 0				
350	234 - 288	1 33 2 xxx LLL 0 0				
400	289 - 339	1 33 2 xxx LLL 0 0				
450	340 - 380	1 33 2 xxx LLL 0 0				
500	381 - 430	1 33 2 xxx LLL 0 0				

sealing against pressing water, split version**

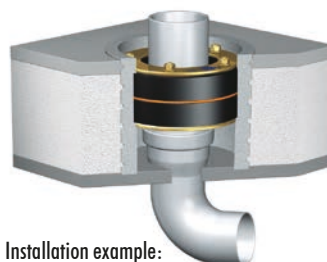
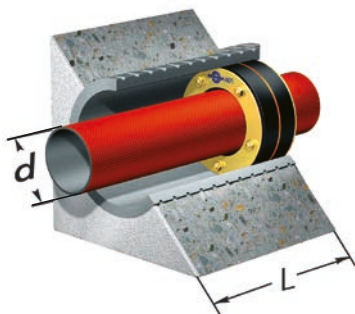
*) DPS up to ND 350

xxx see page 3

Other dimensions on request. We will gladly advise you: Phone: 0049 4207/9166 550

With your order we need the following information:

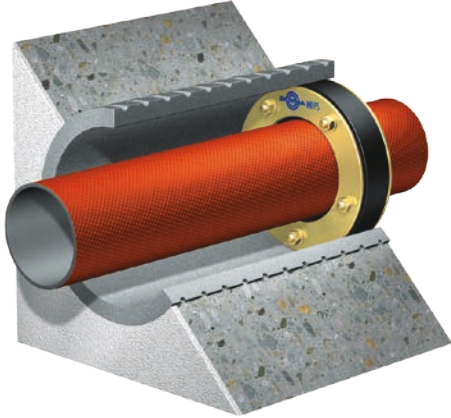
- pipe/cable outer diameter d
- core bore inner diameter D1 or ND of pipe sleeve



Installation example:
Curaflex® 3300, double sealing installed in a floor.

***) Concrete adhesive for bonding of the pipe sleeve parts see page 24

Curaflex® combination 3100 (pipe sleeves 3000 and gasket insert A with DPS*); for construction without tanking membranes

ND pipe sleeves [mm]	for pipe outer diameter from - to [mm]	part number	Length pipe sleeves: LLL			
			200/240/250	300	350/365/400	500
			Curaflex® 3100			
80	1 - 40	1 31 0 xxx LLL 0 0	 <p>sealing against non-pressing water</p>			
100	41 - 57	1 31 0 xxx LLL 0 0				
125	58 - 77	1 31 0 xxx LLL 0 0				
150	78 - 104	1 31 0 xxx LLL 0 0				
200	105 - 145	1 31 0 xxx LLL 0 0				
250	146 - 190	1 31 0 xxx LLL 0 0				
300	191 - 233	1 31 0 xxx LLL 0 0				
350	234 - 288	1 31 0 xxx LLL 0 0				
400	289 - 339	1 31 0 xxx LLL 0 0				
450	340 - 380	1 31 0 xxx LLL 0 0				
500	381 - 430	1 31 0 xxx LLL 0 0				

*) DPS up to ND 350

xxx see page 3

Curaflex® combination 3101, special fibre cement pipe sleeve with fibre cement flange and gasket insert Curaflex A, for thick bituminous coating, for non-pressing water



Installation example:
Curaflex® 3101,
sealing against non-pressing
water, length 415 mm.

ND pipe sleeves [mm]	for pipe outer diameter from - to [mm]	part number
		Length pipe sleeves: 415 mm
80	1 - 40	1 31 0 xxx 415 0 9
100	1 - 57	1 31 0 xxx 415 0 9
125	58 - 77	1 31 0 xxx 415 0 9
150	78 - 104	1 31 0 xxx 415 0 9
200	105 - 145	1 31 0 xxx 415 0 9
250	146 - 190	1 31 0 xxx 415 0 9
300	191 - 233	1 31 0 xxx 415 0 9

xxx see page 3

Other materials and dimensions on request: Fon: 04207/9166-550.

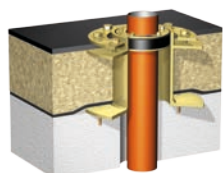
Further Curaflex® pipe sleeves and combinations with steel pipe sleeves



Curaflex® pipe sleeves 7006-M-S

Curaflex® pipe sleeves 7006/M/S

Manifold pipe sleeve for the sealing of several service ducts. Steel plate for installation on the face of walls with fix and loose flange according to DIN 18195. Leak-proof against pressing water, for constructions with tanking membrane (black tank).



Curaflex® combination 5.5102

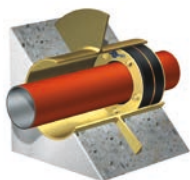
Curaflex® combination 5.5102

Consisting of steel pipe sleeve 5.5002, with fix- and loose flange according to DIN 18195-9 and an additional puddle flange a Mittelflansch as well as gasket insert Curaflex® A.

This system is a special lead through against non-pressing water, applicable in case of

- one resp. several tanking membrane(s) (if necessary also available with 2 x fix and loose flange)
- flat roofs or walls with insulation

This system will be manufactured custom made. Also available against pressing water (Curaflex® 6.6302). In case of inquiries or orders, please indicate the exact measurements!



Curaflex® combination 9300

Curaflex® combination 9300

Consisting of steel pipe sleeve with puddle flange Curaflex® 9000 and gasket insert Curaflex® C, suitable for constructions without tanking membrane resp. bituminous thick coating, leak-proof against pressing water.

Packings for pipe sleeves with fixed and loose flange systems

According to German regulations, tanking membranes must be sandwiched between durable, pliant packings. The packings must be made from the same material as the membrane or from pliant elastomers.

In the case of fixed and loose flange systems, a perfect seal is only guaranteed when the thickness and elasticity of the bituminous tanking membrane is great enough to ensure that it is uniformly clamped between the flanges. In the case of tanking membranes made from very thin and/or very hard materials, compression by the flanges alone is often inadequate. From our experience, we recommend the use of elastomer packings

in conjunction with tanking membranes made from ECB, PIB, PVC-p, EPDM, EVA as well as PE mod., PE-HD and PVC.

Doyma elastomer packings are made from EPDM or CR (Chloroprene = Neoprene). They are supplied ready for installation with pre-punched holes which align with the threaded bolts on the fixed flange. One packing is installed by placing it on the fixed flange, then the tanking membrane is trimmed to suit and the second packing is then laid in place over the membrane and, finally, the loose flange is installed and tightened.

Elastomer packings are available as an extra accessory. If required, please order Curaflex® 1775.

Accessories for thick bituminous compound membranes

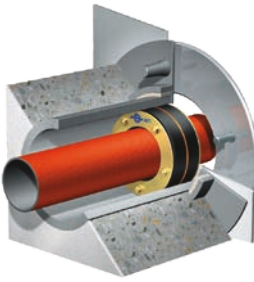
According to DIN 18 195, installation of thick bituminous compound membranes in conjunction with fixed and loose flange systems should be accompanied by a fabric inlay in the membrane in the area around the penetration. This is necessary to ensure a lasting seal, especially against pressing water. The accessories for the correct preparation of the penetration comprise a fibreglass matrix, spacer washers, rubber O-rings

and coarse surface finish to the fixed and loose flanges to maximise the grip of the flanges on the membrane.

Order ref No 1776/5 for non-pressing water, alternatively No 1776/6 for pressing water.

please also remember to order Curaflex® 1776 and Curaflex® 1777 or 1778 (for prices see page 19).

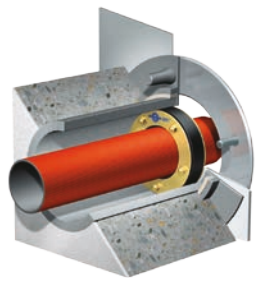
Curaflex® combinations 4300, pipe sleeves 4006 and gasket insert C with DPS*; for constructions with tanking membranes/thick bituminous coating, see page 18

ND pipe sleeves	for pipe outer diameter from - to	part number	Length pipe sleeves: LLL				Acc. for thick bitum. coating*	Elastomer packings** (2 pcs.)
			200/240/250	300	350/365/400	500		
			Curaflex® pipe sleeves 4300					
80	1 - 40	1 43 0 xxx LLL 0 0	 <p>against pressing water</p>				1 99 6 776 080 4 0	1 99 6 775 080 4 0
100	41 - 57	1 43 0 xxx LLL 0 0					1 99 6 776 100 4 0	1 99 6 775 100 4 0
125	58 - 77	1 43 0 xxx LLL 0 0					1 99 6 776 125 4 0	1 99 6 775 125 4 0
150	78 - 104	1 43 0 xxx LLL 0 0					1 99 6 776 150 4 0	1 99 6 775 150 4 0
200	105 - 145	1 43 0 xxx LLL 0 0					1 99 6 776 200 4 0	1 99 6 775 200 4 0
250	146 - 190	1 43 0 xxx LLL 0 0					1 99 6 776 250 4 0	1 99 6 775 250 4 0
300	191 - 233	1 43 0 xxx LLL 0 0					1 99 6 776 300 4 0	1 99 6 775 300 4 0

xxx see page 3

***) information see page 18

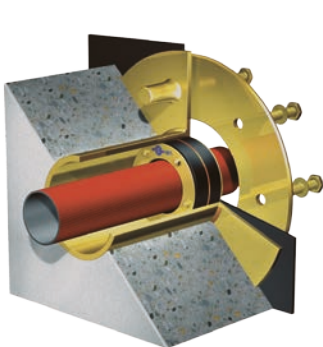
Curaflex® combinations 4100, pipe sleeves 4005 and gasket insert A with DPS*; for constructions with tanking membranes/thick bituminous coating, see page 18

ND pipe sleeves	for pipe outer diameter from - to	part number	Length pipe sleeves: LLL				Acc. for thick bitum. coating*	Elastomer packings** (2 pcs.)
			200/240/250	300	350/365/400	500		
			Curaflex® pipe sleeves 4100					
80	1 - 40	1 41 0 xxx LLL 0 0	 <p>against non-pressing water</p>				1 99 5 776 080 4 0	1 99 5 775 080 4 0
100	41 - 57	1 41 0 xxx LLL 0 0					1 99 5 776 100 4 0	1 99 5 775 100 4 0
125	58 - 77	1 41 0 xxx LLL 0 0					1 99 5 776 125 4 0	1 99 5 775 125 4 0
150	78 - 104	1 41 0 xxx LLL 0 0					1 99 5 776 150 4 0	1 99 5 775 150 4 0
200	105 - 145	1 41 0 xxx LLL 0 0					1 99 5 776 200 4 0	1 99 5 775 200 4 0
250	146 - 190	1 41 0 xxx LLL 0 0					1 99 5 776 250 4 0	1 99 5 775 250 4 0
300	191 - 233	1 41 0 xxx LLL 0 0					1 99 5 776 300 4 0	1 99 5 775 300 4 0

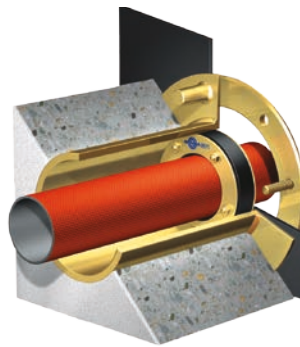
xxx see page 3

***) information see page 18

Other materials and dimensions on request: Fon: 04207/9166-550. Other sealing rubber types see page 3



for ND > 300:
Curaflex® 6300
against pressing water
price/€ on request



for ND > 300:
Curaflex® 5100
against non-pressing water
price/€ on request

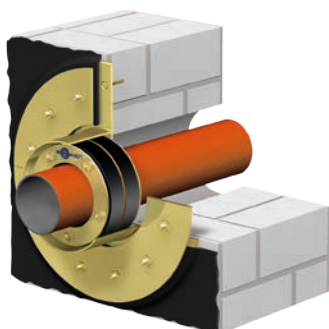
Accessories: hole punch for tanking membranes

for pressing water:	part number
1777/6, for approx. 2 applications	1 99 6 777 000 0 0
1778/6, for manifold applications	1 99 6 778 000 0 0

for non-pressing water:	part number
1777/5, for approx. 2 applications	1 99 5 777 000 0 0
1778/5, for manifold applications	1 99 5 778 000 0 0

Curaflex® combinations 7300 and 7300/T, sealing on the face of walls, against pressing water; for constructions with tanking membranes/thick bituminous coating; according to DIN 18195 T9

Curaflex®



Curaflex® 7300, consists of pipe sleeve 7006 and gasket insert C, against pressing water

ND pipe sleeves/ Core bores	pipe outer diameter from - to	Curaflex® 7300 part number Mat.: galv.	Elastomer packings**
			part number
80	1 - 40	1 73 0 xxx 000 0 0	1 99 6 775 080 7 0
100	41 - 57	1 73 0 xxx 000 0 0	1 99 6 775 100 7 0
125	58 - 77	1 73 0 xxx 000 0 0	1 99 6 775 125 7 0
150	78 - 104	1 73 0 xxx 000 0 0	1 99 6 775 150 7 0
200	105 - 145	1 73 0 xxx 000 0 0	1 99 6 775 200 7 0
250	146 - 190	1 73 0 xxx 000 0 0	1 99 6 775 250 7 0
300	191 - 233	1 73 0 xxx 000 0 0	1 99 6 775 300 7 0
350	234 - 288	1 73 0 xxx 000 0 0	1 99 6 775 350 7 0
400	289 - 339	1 73 0 xxx 000 0 0	1 99 6 775 400 7 0
450	340 - 380	1 73 0 xxx 000 0 0	1 99 6 775 450 7 0
500	381 - 430	1 73 0 xxx 000 0 0	1 99 6 775 500 7 0

xxx see page 3

** information see page 18

Curaflex® 7300/T

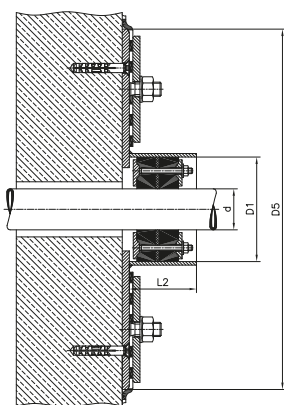


Curaflex® 7300/T, consisting of pipe sleeves 7006/T and Gasket insert Quick In C, against pressing water

ND pipe sleeves/ Core bores	pipe outer diameter from - to	Curaflex® 7300/T part number Mat.: galv.	Elastomer packings**
			part number
80	1 - 40	1 73 2 xxx 000 0 0	1 99 6 775 080 7 2
100	41 - 57	1 73 2 xxx 000 0 0	1 99 6 775 100 7 2
125	58 - 77	1 73 2 xxx 000 0 0	1 99 6 775 125 7 2
150	78 - 104	1 73 2 xxx 000 0 0	1 99 6 775 150 7 2
200	105 - 145	1 73 2 xxx 000 0 0	1 99 6 775 200 7 2
250	146 - 190	1 73 2 xxx 000 0 0	1 99 6 775 250 7 2
300	191 - 233	1 73 2 xxx 000 0 0	1 99 6 775 300 7 2
350	234 - 288	1 73 2 xxx 000 0 0	1 99 6 775 350 7 2
400	289 - 339	1 73 2 xxx 000 0 0	1 99 6 775 400 7 2
450	340 - 380	1 73 2 xxx 000 0 0	1 99 6 775 450 7 2
500	381 - 430	1 73 2 xxx 000 0 0	1 99 6 775 500 7 2

xxx see page 3

** information see page 18



Curaflex® pipe sleeves 7300

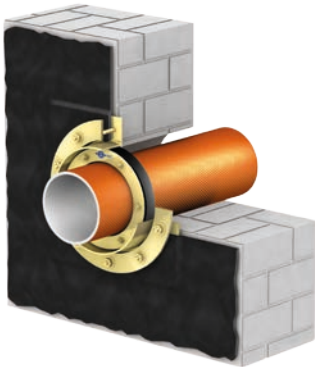
d: outer diameter of the service pipe
D1: inner diameter of pipe sleeve
L2: length of sleeve

Required accessories for Curaflex® 7300/T

	part number
Sika Cleaner-1 (1754) 1 litre, covers 8 m ²	1 99 0 754 000 0 0
Sika primer-3 N (1755) 0,25 litre, covers 1,25 m ²	1 99 0 755 000 0 0
Sikaflex-11 FC+ (1756) sealant, 300 ml, covers 0,24 m ²	1 99 0 756 000 0 0

Other materials and dimensions on request: Fon: 04207/9166-550

Curaflex® combinations 7100 and 7100/T, sealing on the face of walls, against non-pressing water; for constructions with tanking membranes/thick bituminous coating; according to DIN 18195 T9



Curaflex® 7100, consisting of pipe sleeves 7005 and Gasket insert A, against non-pressing water

ND pipe sleeves/ Core bores	pipe outer diameter from - to	Curaflex® 7100 part number Mat.: galv.	sanded surface bituminous coating**	Elastomer packings**
			part number	part number
80	1 - 40	1 71 0 xxx 000 0 0	1 71 0 xxx 000 5 0	1 99 5 775 080 7 0
100	41 - 57	1 71 0 xxx 000 0 0	1 71 0 xxx 000 5 0	1 99 5 775 100 7 0
125	58 - 77	1 71 0 xxx 000 0 0	1 71 0 xxx 000 5 0	1 99 5 775 125 7 0
150	78 - 104	1 71 0 xxx 000 0 0	1 71 0 xxx 000 5 0	1 99 5 775 150 7 0
200	105 - 145	1 71 0 xxx 000 0 0	1 71 0 xxx 000 5 0	1 99 5 775 200 7 0
250	146 - 190	1 71 0 xxx 000 0 0	1 71 0 xxx 000 5 0	1 99 5 775 250 7 0
300	191 - 233	1 71 0 xxx 000 0 0	1 71 0 xxx 000 5 0	1 99 5 775 300 7 0
350	234 - 288	1 71 0 xxx 000 0 0	1 71 0 xxx 000 5 0	1 99 5 775 350 7 0
400	289 - 339	1 71 0 xxx 000 0 0	1 71 0 xxx 000 5 0	1 99 5 775 400 7 0
450	340 - 380	1 71 0 xxx 000 0 0	1 71 0 xxx 000 5 0	1 99 5 775 450 7 0
500	381 - 430	1 71 0 xxx 000 0 0	1 71 0 xxx 000 5 0	1 99 5 775 500 7 0

xxx see page 3

**) information see page 18

Curaflex® 7100/T



Curaflex® 7100/T, consisting of pipe sleeves 7005/T and gasket insert Quick In A, against non-pressing water

ND pipe sleeves/ Core bores	pipe outer diameter from - to	Curaflex® 7100/T part number Mat.: galv.	sanded surface bituminous coating**	Elastomer packings**
			part number Mat.: galv.	part number
80	1 - 40	1 71 2 xxx 000 0 0	1 71 2 xxx 000 5 0	1 99 5 775 080 7 2
100	41 - 57	1 71 2 xxx 000 0 0	1 71 2 xxx 000 5 0	1 99 5 775 100 7 2
125	58 - 77	1 71 2 xxx 000 0 0	1 71 2 xxx 000 5 0	1 99 5 775 125 7 2
150	78 - 104	1 71 2 xxx 000 0 0	1 71 2 xxx 000 5 0	1 99 5 775 150 7 2
200	105 - 145	1 71 2 xxx 000 0 0	1 71 2 xxx 000 5 0	1 99 5 775 200 7 2
250	146 - 190	1 71 2 xxx 000 0 0	1 71 2 xxx 000 5 0	1 99 5 775 250 7 2
300	191 - 233	1 71 2 xxx 000 0 0	1 71 2 xxx 000 5 0	1 99 5 775 300 7 2
350	234 - 288	1 71 2 xxx 000 0 0	1 71 2 xxx 000 5 0	1 99 5 775 350 7 2
400	289 - 339	1 71 2 xxx 000 0 0	1 71 2 xxx 000 5 0	1 99 5 775 400 7 2
450	340 - 380	1 71 2 xxx 000 0 0	1 71 2 xxx 000 5 0	1 99 5 775 450 7 2
500	381 - 430	1 71 0 xxx 000 0 0	1 71 0 xxx 000 5 0	1 99 5 775 500 7 2

xxx see page 3

**) information see page 18

Required accessories for Curaflex® 7300/T

	part number
Sika Cleaner-1 (1754) 1 litre, covers 8 m ²	1 99 0 754 000 0 0
Sika primer-3 N (1755) 0,25 litre, covers 1,25 m ²	1 99 0 755 000 0 0
Sikaflex-11 FC+ (1756) sealant, 300 ml, covers 0,24 m ²	1 99 0 756 000 0 0

Other materials and dimensions on request: Fon: 04207/9166-550

Curaflex® combinations 8300 and 8300/T, sealing on the face of walls for constructions without tanking membranes, against pressing water; steel parts: galvanized

Curaflex®

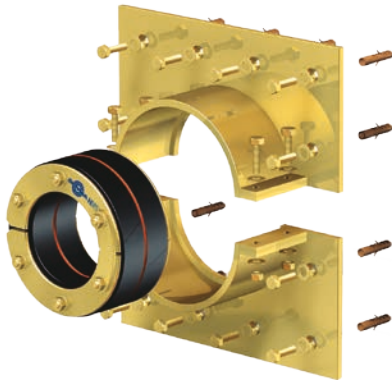


Curaflex® 8300, consisting of pipe sleeves 8000 and gasket insert Curaflex® C, against pressing water

ND pipe sleeves/ Core bores	pipe outer diameter from - to	Curaflex® 8300 part number Mat.: galv.
80	1 - 40	1 83 0 xxx 000 0 0
100	41 - 57	1 83 0 xxx 000 0 0
125	58 - 77	1 83 0 xxx 000 0 0
150	78 - 104	1 83 0 xxx 000 0 0
200	105 - 145	1 83 0 xxx 000 0 0
250	146 - 190	1 83 0 xxx 000 0 0
300	191 - 233	1 83 0 xxx 000 0 0
350	234 - 288	1 83 0 xxx 000 0 0
400	289 - 339	1 83 0 xxx 000 0 0
450	340 - 380	1 83 0 xxx 000 0 0
500	381 - 430	1 83 0 xxx 000 0 0

xxx see page 3

Curaflex® 8300/T



Curaflex® 8300/T, consisting of pipe sleeves 8000/T and gasket insert Curaflex® Quick In C, against pressing water

ND pipe sleeves/ Core bores	pipe outer diameter from - to	Curaflex® 8300/T part number Mat.: galv.
80	1 - 40	1 83 2 xxx 000 0 0
100	41 - 57	1 83 2 xxx 000 0 0
125	58 - 77	1 83 2 xxx 000 0 0
150	78 - 104	1 83 2 xxx 000 0 0
200	105 - 145	1 83 2 xxx 000 0 0
250	146 - 190	1 83 2 xxx 000 0 0
300	191 - 233	1 83 2 xxx 000 0 0
350	234 - 288	1 83 2 xxx 000 0 0
400	289 - 339	1 83 2 xxx 000 0 0
450	340 - 380	1 83 2 xxx 000 0 0
500	381 - 430	1 83 2 xxx 000 0 0

xxx see page 3

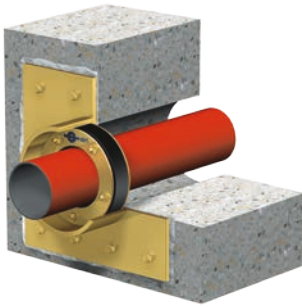
Required accessories for Curaflex® 7300/T

part number

Sika Cleaner-1 (1754) 1 litre, covers 8 m ²	1 99 0 754 000 0 0
Sika primer-3 N (1755) 0,25 litre, covers 1,25 m ²	1 99 0 755 000 0 0
Sikaflex-11 FC+ (1756) sealant, 300 ml, covers 0,24 m ²	1 99 0 756 000 0 0

Other materials and dimensions on request: Fon: 04207/9166-550

Curaflex® combinations 8100 and 8100/T, sealing on the face of walls for constructions without tanking membranes, against non-pressing water; steel parts: galvanized



Curaflex® 8100, comprising pipe sleeves 8000 and gasket insert Curaflex® A, against non-pressing water

ND pipe sleeves/ Core bores [mm]	for pipe outer diameter from - to [mm]	Curaflex® 8100 part number Mat.: galv.	sanded surface for thick bituminous coating**
			Curaflex® 8100 part number, mat.: galv.
80	1 - 40	1 81 0 xxx 000 0 0	1 81 0 xxx 000 5 0
100	41 - 57	1 81 0 xxx 000 0 0	1 81 0 xxx 000 5 0
125	58 - 77	1 81 0 xxx 000 0 0	1 81 0 xxx 000 5 0
150	78 - 104	1 81 0 xxx 000 0 0	1 81 0 xxx 000 5 0
200	105 - 145	1 81 0 xxx 000 0 0	1 81 0 xxx 000 5 0
250	146 - 190	1 81 0 xxx 000 0 0	1 81 0 xxx 000 5 0
300	191 - 233	1 81 0 xxx 000 0 0	1 81 0 xxx 000 5 0
350	234 - 288	1 81 0 xxx 000 0 0	1 81 0 xxx 000 5 0
400	289 - 339	1 81 0 xxx 000 0 0	1 81 0 xxx 000 5 0
450	340 - 380	1 81 0 xxx 000 0 0	1 81 0 xxx 000 5 0
500	381 - 430	1 81 0 xxx 000 0 0	1 81 0 xxx 000 5 0

xxx see page 3 **) information see page 18



Curaflex® 8100/T, consisting of pipe sleeves 8000/T and gasket insert Curaflex® Quick In A, against non-pressing water

Curaflex® 8100/T

ND pipe sleeves/ Core bores [mm]	for pipe outer diameter from - to [mm]	Curaflex® 8100/T part number Mat.: galv.	sanded surface for thick bituminous coating**
			Curaflex® 8100/T part number, Mat.: galv.
80	1 - 40	1 81 2 xxx 000 0 0	1 81 2 xxx 000 5 0
100	41 - 57	1 81 2 xxx 000 0 0	1 81 2 xxx 000 5 0
125	58 - 77	1 81 2 xxx 000 0 0	1 81 2 xxx 000 5 0
150	78 - 104	1 81 2 xxx 000 0 0	1 81 2 xxx 000 5 0
200	105 - 145	1 81 2 xxx 000 0 0	1 81 2 xxx 000 5 0
250	146 - 190	1 81 2 xxx 000 0 0	1 81 2 xxx 000 5 0
300	191 - 233	1 81 2 xxx 000 0 0	1 81 2 xxx 000 5 0
350	234 - 288	1 81 2 xxx 000 0 0	1 81 2 xxx 000 5 0
400	289 - 339	1 81 2 xxx 000 0 0	1 81 2 xxx 000 5 0
450	340 - 380	1 81 2 xxx 000 0 0	1 81 2 xxx 000 5 0
500	381 - 430	1 81 2 xxx 000 0 0	1 81 2 xxx 000 5 0

Required accessories for Curaflex® 7300/T

	part number
Sika Cleaner-1 (1754) 1 litre, covers 8 m ²	1 99 0 754 000 0 0
Sika primer-3 N (1755) 0,25 litre, covers 1,25 m ²	1 99 0 755 000 0 0
Sikaflex-11 FC+(1756) sealant, 300 ml, covers 0,24 m ²	1 99 0 756 000 0 0

Other materials and dimensions on request: Fon: 04207/9166-550

Curaflex® Accessories

Curaflex®



Curaflex® Aquagard

product	part number
Sikadur-31 Concrete adhesive (Curaflex® 1740), 1.2 kilos, coverage 0.6 m ²	1 99 0 740 000 0 0
AQUAGARD-Sealing (big)	1 99 0 710 715 0 0
comprising:	
AQUAGARD primer (Curaflex® 1710), 1 litre covers 4,0 qm	1 99 0 710 000 0 0
AQUAGARD special paint (Curaflex® 1715), 1 litre covers 3,5 qm	1 99 0 715 000 0 0
AQUAGARD-Sealing (smal)	1 99 0 711 716 0 0
comprising:	
AQUAGARD primer (Curaflex® 1711), 1/3 litre covers 1,5 qm	1 99 0 711 000 0 0
AQUAGARD special paint (Curaflex® 1716), 1/3 litre covers 1,0 qm	1 99 0 716 000 0 0
Curaflex® 1745 2-part epoxy coating with high chemical resistance for coating sleeve and core bore surfaces, seals against natural and town gas, liquid gas, lead-free petrol, diesel etc. 2.0 kilos, covers 2.0 m ²	1 99 0 745 000 0 0
Sika Cleaner-1 1 litre covers 8 m ² (1754)	1 99 0 754 000 0 0
Sika primer-3 N , 0,25 litre covers for 1,25 m ² (1755)	1 99 0 755 000 0 0
Sikaflex-11 FC+, sealant 300 ml, covers 0,24 m ² (1756)	1 99 0 756 000 0 0



Curaflex® 1701
Formwork fastener



Curaflex® 1702
protection cap



Curaflex® 1708
Aesthetic seal

ND pipe sleeves/ Core bores	Curaflex® 1701 part number
80	1 99 0 701 080 0 0
100	1 99 0 701 100 0 0
125	1 99 0 701 125 0 0
150	1 99 0 701 150 0 0
200	1 99 0 701 200 0 0
250	1 99 0 701 250 0 0
300	1 99 0 701 300 0 0
350	1 99 0 701 350 0 0
400	1 99 0 701 400 0 0

ND pipe sleeves/ Core bores	Curaflex® 1702 part number
80	1 99 0 702 080 0 0
100	1 99 0 702 100 0 0
125	1 99 0 702 125 0 0
150	1 99 0 702 150 0 0
200	1 99 0 702 200 0 0
250	1 99 0 702 250 0 0
300	1 99 0 702 300 0 0
350	1 99 0 702 350 0 0
400	1 99 0 702 400 0 0

ND pipe sleeves/ Core bores	pipe outer diameter from - to [mm]	Curaflex® 1708 part number
80	19 - 28	1 99 0 708 080 0 0
80	29 - 40	1 99 0 708 081 0 0
100	23 - 40	1 99 0 708 100 0 0
100	39 - 64	1 99 0 708 101 0 0
125	54 - 77	1 99 0 708 125 0 0
150	75 - 115	1 99 0 708 150 0 0
200	98 - 160	1 99 0 708 200 0 0

Modular seals Link-Seal*



Sealing module, version C

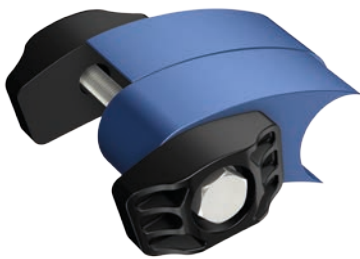
Link-Seal elements for steel/ cast iron pipes

Sealing element, version C EPDM – black rubber, galvanized screws	
sealing module type	part number
LS 200	6 50 0 200 000 0 0
LS 265	6 50 0 265 000 0 0
LS 275	6 50 0 275 000 0 0
LS 300	6 50 0 300 000 0 0
LS 310	6 50 0 310 000 0 0
LS 315	6 50 0 315 000 0 0
LS 325	6 50 0 325 000 0 0
LS 340	6 50 0 340 000 0 0
LS 360	6 50 0 360 000 0 0
LS 400	6 50 0 400 000 0 0
LS 410	6 50 0 410 000 0 0
LS 425	6 50 0 425 000 0 0
LS 440	6 50 0 440 000 0 0
LS 475	6 50 0 475 000 0 0
LS 500	6 50 0 500 000 0 0
LS 525	6 50 0 525 000 0 0
LS 575	6 50 0 575 000 0 0
LS 615	6 50 0 615 000 0 0
LS 650	6 50 0 650 000 0 0

Sealing element, version S316 EPDM – black rubber, stainless steel screws A4-70	
sealing module type	part number
LS 200	6 50 0 200 000 4 0
LS 265	6 50 0 265 000 4 0
LS 275	6 50 0 275 000 4 0
LS 300	6 50 0 300 000 4 0
LS 310	6 50 0 310 000 4 0
LS 315	6 50 0 315 000 4 0
LS 325	6 50 0 325 000 4 0
LS 340	6 50 0 340 000 4 0
LS 360	6 50 0 360 000 4 0
LS 400	6 50 0 400 000 4 0
LS 410	6 50 0 410 000 4 0
LS 425	6 50 0 425 000 4 0
LS 440	6 50 0 440 000 4 0
LS 475	6 50 0 475 000 4 0
LS 500	6 50 0 500 000 4 0
LS 525	6 50 0 525 000 4 0
LS 575	6 50 0 575 000 4 0
LS 615	6 50 0 615 000 4 0
LS 650	6 50 0 650 000 4 0

Link chains

Link-Seal elements for plastic pipes



Sealing module, version BC

Sealing element, version BC EPDM - blue rubber, Shore 40° ± 5°, galvanized screws	
sealing module type	part number
LS 200	6 50 0 200 000 0 4
LS 265	6 50 0 265 000 0 4
LS 275	6 50 0 275 000 0 4
LS 300	6 50 0 300 000 0 4
LS 310	6 50 0 310 000 0 4
LS 315	6 50 0 315 000 0 4
LS 325	6 50 0 325 000 0 4
LS 340	6 50 0 340 000 0 4
LS 360	6 50 0 360 000 0 4
LS 400	6 50 0 400 000 0 4
LS 410	6 50 0 410 000 0 4
LS 425	6 50 0 425 000 0 4
LS 440**	6 50 0 440 000 0 4
LS 475	6 50 0 475 000 0 4
LS 500	6 50 0 500 000 0 4
LS 525	6 50 0 525 000 0 4
LS 575	6 50 0 575 000 0 4
LS 625	6 50 0 625 000 0 4
LS 700	6 50 0 700 000 0 4

Sealing element, version BS 316, EPDM – blue rubber, Shore 40° ± 5°, stainless steel screws A4-70	
sealing module type	part number
LS 200	6 50 0 200 000 4 4
LS 265	6 50 0 265 000 4 4
LS 275	6 50 0 275 000 4 4
LS 300	6 50 0 300 000 4 4
LS 310	6 50 0 310 000 4 4
LS 315	6 50 0 315 000 4 4
LS 325	6 50 0 325 000 4 4
LS 340	6 50 0 340 000 4 4
LS 360	6 50 0 360 000 4 4
LS 400	6 50 0 400 000 4 4
LS 410	6 50 0 410 000 4 4
LS 425	6 50 0 425 000 4 4
LS 440**	6 50 0 440 000 4 4
LS 475	6 50 0 475 000 4 4
LS 500	6 50 0 500 000 4 4
LS 525	6 50 0 525 000 4 4
LS 575	6 50 0 575 000 4 4
LS 625	6 50 0 625 000 4 4
LS 700	6 50 0 700 000 4 4

For other rubber materials such as nitrile, with KTW/W 270 recommendation, silicone: price/€ on request. **Fon: +49 (0)4207/9166-550**

***) Link-Seal products are exempt from the 25 years DOYMA guarantee.**

****) rubber black**

Modular seals Link-Seal*, assembled and suitable for normed steel/ iron cast pipes



type C:
 EPDM – black rubber,
 material of pressureplate: glass fiber polyamide in black
 galvanized screws

type S316:
 EPDM – black rubber,
 material of pressureplate: glass fiber polyamide in black
 stainless steel screws A4-70

assembled chain for steel/ cast iron pipes

ND pipe sleeves/ core bore [mm]	for pipe outer diameter [mm]	Quantity x element	type C	type S316
			part number	part number
80	42 + 48	5 x 265	6 50 0 042 080 0 0	6 50 0 042 080 4 0
100	34 + 42	5 x 340	6 50 0 042 100 0 0	6 50 0 042 100 4 0
	48	6 x 315	6 50 0 048 100 0 0	6 50 0 048 100 4 0
	58 + 60	6 x 300	6 50 0 060 100 0 0	6 50 0 060 100 4 0
125	42 + 48 + 58	5 x 360	6 50 0 048 125 0 0	6 50 0 048 125 4 0
	60	7 x 340	6 50 0 060 125 0 0	6 50 0 060 125 4 0
	76 + 78	8 x 315	6 50 0 076 125 0 0	6 50 0 076 125 4 0
150	58 + 60	5 x 410	6 50 0 060 150 0 0	6 50 0 060 150 4 0
	76	6 x 360	6 50 0 076 150 0 0	6 50 0 076 150 4 0
	83	7 x 360	6 50 0 083 150 0 0	6 50 0 083 150 4 0
	89	9 x 340	6 50 0 089 150 0 0	6 50 0 089 150 4 0
	98	10 x 315	6 50 0 098 150 0 0	6 50 0 098 150 4 0
	110	7 x 310	6 50 0 110 150 0 0	6 50 0 110 150 4 0
	114	10 x 265	6 50 0 114 150 0 0	6 50 0 114 150 4 0
200	110	7 x 475	6 50 0 110 200 0 0	6 50 0 110 200 4 0
	114	7 x 410	6 50 0 114 200 0 0	6 50 0 114 200 4 0
	135	13 x 340	6 50 0 135 200 0 0	6 50 0 135 200 4 0
250	160	9 x 475	6 50 0 160 250 0 0	6 50 0 160 250 4 0
	168	7 x 400	6 50 0 168 250 0 0	6 50 0 168 250 4 0
300	160 + 168 + 170	7 x 500	6 50 0 160 300 0 0	6 50 0 160 300 4 0
	210 + 219	12 x 410	6 50 0 219 300 0 0	6 50 0 219 300 4 0
	222	15 x 360	6 50 0 222 300 0 0	6 50 0 222 300 4 0
350	273	18 x 360	6 50 0 273 350 0 0	6 50 0 273 350 4 0
400	324	21 x 360	6 50 0 324 400 0 0	6 50 0 324 400 4 0
500	406	21 x 475	6 50 0 406 500 0 0	6 50 0 406 500 4 0
	429	16 x 425	6 50 0 429 500 0 0	6 50 0 429 500 4 0
600	508	25 x 475	6 50 0 508 600 0 0	6 50 0 508 600 4 0
	532	19 x 425	6 50 0 532 600 0 0	6 50 0 532 600 4 0
700	610	30 x 475	6 50 0 610 700 0 0	6 50 0 610 700 4 0
800	711	25 x 400	6 50 0 711 800 0 0	6 50 0 711 800 4 0
900	813	39 x 475	6 50 0 813 900 0 0	6 50 0 813 900 4 0
1000	914	32 x 400	6 50 0 914 999 0 0	6 50 0 914 999 4 0

For other rubber materials such as nitrile, with KTW/W 270 recommendation, silicone: price/€ on request. **Fon: + 49 (0)4207/9166-550**

*) Link-Seal products are exempt from the 25 years DOYMA guarantee.

Modular seals Link-Seal*, assembled and suitable for normed plastic pipes



type BC:
EPDM – blue rubber,
material of pressureplate: glass fiber polyamide in black
galvanized screws

type BS316:
EPDM – blue rubber,
material of pressureplate: glass fiber polyamide in black
stainless steel screws A4-70

assembled chain for plastic pipes

ND pipe sleeves/ core bore [mm]	for pipe outer diameter [mm]	Quantity x element	type BC	type BS316
			part number	part number
80	40	7 x 275	6 50 0 040 080 0 4	6 50 0 040 080 4 4
100	32 + 40	5 x 340	6 50 0 040 100 0 4	6 50 0 040 100 4 4
	50	6 x 315	6 50 0 050 100 0 4	6 50 0 050 100 4 4
	63	6 x 265	6 50 0 063 100 0 4	6 50 0 063 100 4 4
125	63	7 x 340	6 50 0 063 125 0 4	6 50 0 063 125 4 4
	75	8 x 315	6 50 0 075 125 0 4	6 50 0 075 125 4 4
150	63	5 x 410	6 50 0 063 150 0 4	6 50 0 063 150 4 4
	75	6 x 360	6 50 0 075 150 0 4	6 50 0 075 150 4 4
	90	9 x 340	6 50 0 090 150 0 4	6 50 0 090 150 4 4
	110	7 x 310	6 50 0 110 150 0 4	6 50 0 110 150 4 4
200	90	6 x 575	6 50 0 090 200 0 4	6 50 0 090 200 4 4
	110	7 x 475	6 50 0 110 200 0 4	6 50 0 110 200 4 4
	125	9 x 360	6 50 0 125 200 0 4	6 50 0 125 200 4 4
	140	13 x 340	6 50 0 140 200 0 4	6 50 0 140 200 4 4
	160	10 x 310	6 50 0 160 200 0 4	6 50 0 160 200 4 4
250	160	9 x 475	6 50 0 160 250 0 4	6 50 0 160 250 4 4
	180	12 x 360	6 50 0 180 250 0 4	6 50 0 180 250 4 4
	200	18 x 315	6 50 0 200 250 0 4	6 50 0 200 250 4 4
300	200	8 x 440	6 50 0 200 300 0 4	6 50 0 200 300 4 4
	225	15 x 360	6 50 0 225 300 0 4	6 50 0 225 300 4 4
	250	22 x 315	6 50 0 250 300 0 4	6 50 0 250 300 4 4
350	250	9 x 440	6 50 0 250 350 0 4	6 50 0 250 350 4 4
400	315	17 x 410	6 50 0 315 400 0 4	6 50 0 315 400 4 4
450	400	17 x 325	6 50 0 400 450 0 4	6 50 0 400 450 4 4
500	400	14 x 440	6 50 0 400 500 0 4	6 50 0 400 500 4 4
600	500	17 x 440	6 50 0 500 600 0 4	6 50 0 500 600 4 4
700	560	20 x 500	6 50 0 560 700 0 4	6 50 0 560 700 4 4
	630	22 x 425	6 50 0 630 700 0 4	6 50 0 630 700 4 4
800	630	21 x 625	6 50 0 630 800 0 4	6 50 0 630 800 4 4
	710	25 x 400	6 50 0 710 800 0 4	6 50 0 710 800 4 4
900	800	27 x 440	6 50 0 800 900 0 4	6 50 0 800 900 4 4
1000	900	30 x 400	6 50 0 900 999 0 4	6 50 0 900 999 4 4

For other rubber materials such as nitrile, with KTW/W 270 recommendation, silicone: price/€ on request. **Fon: +49 (0)4207/9166-550**

*) Link-Seal products are exempt from the 25 years DOYMA guarantee.

Curaline® BKD 150 (with bayonet action lock)



Single flange sleeve,
BKD 150-K/L



Double flange sleeve,
BKD 150-K2/L

Wall thickness L (mm) → LLL:	150	200	250	300	350	400	450	500
------------------------------	-----	-----	-----	-----	-----	-----	-----	-----

product	part number
BKD 150-K/L	4 01 1 150 LLL 0 0
BKD 150-K2/L	4 02 1 150 LLL 0 0

comes with waterproof blind plug



System cap with one
spigot,
BKD 150-D1/110



System cap with
three spigots,
BKD 150-D3/60



System cap with
eight spigots,
BKD 150-D8/35/25

product	cable diameter	part number
BKD 150-D	blind plug	4 19 1 000 150 0 0
BKD 150-D1/110*1	34 - 108 mm	4 10 1 110 150 0 0
BKD 150-D1/110-KS (with cold shrink shroud)		
BKD 150-D3/59	22 - 57 mm	4 10 1 059 150 0 0
BKD 150-D3/59-KS (with cold shrink shroud)		
BKD 150-D8/35/25*	4 x 7 - 23 mm	4 10 1 035 150 0 0
BKD 150-D8/35/25-KS (with cold shrink shroud)*	4 x 12 - 33 mm	

4 spigots are blanked off, if required please open on site.

4 heat shrink shrouds are included in scope of supply.

(2 x for cable 7 - 23 mm + 2 x for cable 12 - 33 mm).

*1) Cable conduits with outer diameter-Ø 110 mm are pluggable up to the stop and shrinkable.

Duct system with clamping collar

product	part number
BKD 150-DMM 80	4 14 1 080 150 0 0
BKD 150-DMM 110	4 14 1 110 150 0 0
BKD 150-DMM 125	4 14 1 125 150 0 0
BKD 150-DMM 140	4 14 1 140 150 0 0
BKD 150-DMM 160	4 14 1 160 150 0 0



System cap with socket,
BKD 150-DMM X

Duct system for smooth-walled sleeves

product	cable diameter	part number
BKD 150-DSM 110	Ø up to 110 mm	4 12 1 110 150 0 0
BKD 150-DSM 125	Ø up to 125 mm	4 12 1 125 150 0 0
BKD 150-DSM 160	Ø up to 160 mm	4 12 1 160 150 0 0



System cap with socket for
connecting smooth-walled
cable ducts, BKD 150-DSM X

Duct system for corrugated sleeves

product	cable diameter	part number
BKD 150-DM 125	Ø up to 125 mm	4 13 1 125 150 0 0
BKD 150-DM 140	Ø up to 140 mm	4 13 1 140 150 0 0



System cap with socket
BKD 150-DM X



Aluminium flange AF,
BKD 150-AF 235

product	part number
BKD 150-AF 235 (fittings and protection cap incl.)	4 03 1 150 000 0 0
BKD 150-D (sleeve protection plug for AF)	4 19 1 000 150 0 0

Accessories see page 33.

Further variants of BKD 150:

- angled sleeves
- flange sleeves according to DIN 18195-9

price/€ on request

Curaline® KD 110 (with screw fastening)



Single flange sleeve
KD 110-K/L



Double flange sleeve,
KD 110-K2/L

Wall thickness (mm) → LLL:	140	150	200	250	300	350	400	450	500
product	part number								
KD 110-K/L	4 01 2 110 LLL 0 0								
KD 110-K2/L	4 02 2 110 LLL 0 0								



System cap with one
spigot,
KD 110-D1/X



System cap with
three spigots,
KD 110-D3/46



System cap with
seven spigots,
KD 110-D7/32/25

product	cable diameter	part number
KD 110-D	blind plug	4 19 2 000 110 0 0
KD 110-D1/80	26 - 78 mm	4 10 2 080 110 0 0
KD 110-D1/100	26 - 98 mm	4 10 2 100 110 0 0
KD 110-D3/46	16 - 44 mm	4 10 2 046 110 0 0
KD 110-D7/32/25*	4 x 7 - 23 mm 4 x 12 - 30 mm	4 10 2 032 110 0 0

*) 1 spigot is blanked off, if required please open on site.

6 heat shrink shrouds are included in scope of supply. (3 x for cable 7 - 23 mm + 3 x for cable 12 - 30 mm)..



System cap with socket,
KD 110-DMM X

Duct system with clamping collar

product	part number
KD 110-DMM 75	4 14 2 075 110 0 0
KD 110-DMM 80	4 14 2 080 110 0 0
KD 110-DMM 110	4 14 2 110 110 0 0
KD 110-DMM 125	4 14 2 125 110 0 0



System cap with socket,
KD 110-DSM 110

Duct system for smooth-walled sleeves

product	cable diameter	part number
KD 110-DSM 110	Ø up to 110 mm	4 12 2 110 110 0 0



conical insert,
KD 110-WA/Z x D

product	part number
KD 110-WA/1 x 110	4 20 2 110 110 0 0
KD 110-WA/Z x D, bei Z = 1 bis 5 bores	-
KD 110-WA/Z x D, bei Z ab 6 bores	-

Accessories see page 33.

Special flange sleeves KD 110: angled sleeves

price/€ on request

Curaline® BKD 90 (with bayonet action lock)



Single flange sleeve,
BKD 90-K/L



Double flange sleeve,
BKD 90-K2/L

Wall thickness L (mm) → LLL:	150	200	250	300	350	400	450	500
product	part number							
BKD 90-K/L	4 01 3 090 LLL 0 0							
BKD 90-K2/L	4 02 3 090 LLL 0 0							

comes with waterproof blind plug



System cap with
one spigot,
BKD 90-D1/75



System cap with
three spigots,
BKD 90-D3/30



System cap with
five spigots,
BKD 90-D5/20

product	Cable diameter	part number
BKD 90-D (Blind plug)	Blind plug	4 19 3 000 090 0 0
BKD 90-D1/75	26 - 73 mm	4 10 3 075 090 0 0
BKD 90-D3/30	12 - 28 mm	4 10 3 030 090 0 0
BKD 90-D5/20	7 - 18 mm	4 10 3 020 090 0 0



System cap with socket,
BKD 90-DMM X

Duct system with clamping collar

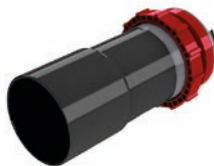
product	part number
BKD 90-DMM 75	4 14 3 075 090 0 0
BKD 90-DMM 85	4 14 3 085 090 0 0
BKD 90-DMM 110	4 14 3 110 090 0 0



System cap with socket,
BKD 90-DSM 110

Duct system for smooth-walled sleeves

product	cable diameter	part number
BKD 90-DSM 110	Ø up to 110 mm	4 12 3 110 090 0 0



System cap with socket,
BKD 90-DM X

Duct system for corrugated sleeves

product	cable diameter	part number
BKD 90-DM 85	Ø up to 125 mm	4 13 3 085 090 0 0
BKD 90-DM 110	Ø up to 140 mm	4 13 3 110 090 0 0



Aluminium flange AF,
BKD 90-AF 150

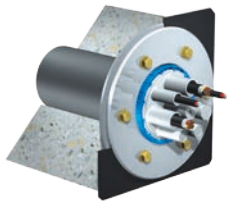
product	part number
BKD 90-AF 150 (fittings and protection cap incl.)	4 03 3 090 000 0 0
BKD 90-D (sleeve protection cap for AF)	4 19 3 000 090 0 0

Accessories see page 33.
Special flange sleeves BKD 90: angled sleeves

price/€ on request

Curaline® BKD 150 in combination with fixed and loose flange construction for constructions with tanking membranes/thick bituminous coating (see page 18)

No part number

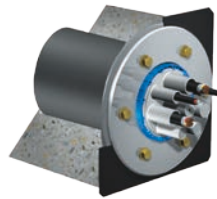


Curaline® sleeve with fixed and loose flange, BKD 150/4006/K/x

Against pressing water

System with single flange sleeve BKD 150/4006/K/200 - 500
--

System with double flange sleeve BKD 150/4006/K2/200 - 500

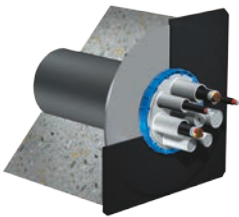


Curaline® sleeve with fixed and loose flange, BKD 150/4005/K/x

Against non-pressing water

System with single flange sleeve BKD 150/4005/K/200 - 500
--

System with double flange sleeve BKD 150/4005/K/200 - 500
--



Curaline® sleeve with bonding flange BKD 150/4001/K/x

Against non-pressing water

System with single flange sleeve BKD 150/4001/K/200 - 500
--

System with double flange sleeve BKD 150/4001/K2/200 - 500

prices without system cap!
Standard lengths 200, 250, 300, 350, 400, 450, 500 mm.
Other lengths on request!

Curaline® KSS: Cable-Secure-System Sealing packings and sleeves

No part number



Sealing packing / K

product
KSS-M 150-K-80
KSS-M 150-K-110
KSS-M 150-K-150



KSS-sleeves

product
KSS-sleeve, 80 mm Ø
KSS-sleeve, 110 mm Ø
KSS-sleeve, 125 mm Ø
KSS-sleeve, 150 mm Ø



System cap / D

product
KSS-M 150-D-110
KSS-M 150-D-125
KSS-M 150-D-150
KSS M 90-D-80



Transition joints with clamping collar

product
ÜMM (cable-Ø 150 mm)
ÜMM (cable-Ø 125 mm)
ÜMM (cable-Ø 110 mm)
ÜMM (cable-Ø 80 mm)

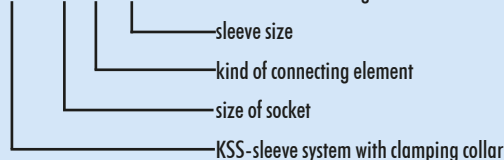


System cap with several spigots

product
KSS-M 150-D3-110
KSS-M 150-D7-110
KSS-M 150-D3-150
KSS M 150-D8-150
KSS-M 90-D3-80
KSS M 90-D5-80

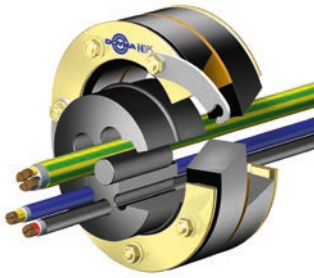
Example for order:

cable duct system **KSS-M 150-D-110**/..... Socket for connecting smooth-walled cable ducts /adhesive Socket-Ø



Curaline® Vario, gasket insert with changeable rubber inserts

No part number



Curaline® Vario

Curaline® Vario	
metal parts: galvanized ¹⁾ , inox 304 or inox 316	
ND 100 z. B. for 3 x 5 - 22 mm	
5 x 5 - 17 mm	
9 x 5 - 12 mm	
Rubber insert only: type CLV 200 core	
metal parts: galvanized ¹⁾ , inox 304 or inox 316	
ND 125 z. B. for 3 x 5 - 30 mm	
5 x 5 - 24 mm	
9 x 5 - 16 mm	
Rubber insert only: type CLV 200 core	
metal parts: galvanized ¹⁾ , inox 304 or inox 316	
ND 150 z. B. for 3 x 5 - 42 mm	
5 x 5 - 34 mm	
9 x 5 - 24 mm	
Rubber insert only: type CLV 200 core	
metal parts: galvanized ¹⁾ , inox 304 or inox 316	
ND 200 z. B. for 3 x 5 - 50 mm	
6 x 5 - 40 mm	
8 x 5 - 30 mm and 1 x 5 - 40 mm	
Rubber insert only: type CLV 200 core	

1) galvanized: electro-galvanized mild steel, yellow passivated and sealant coated

Curaline®

Curaline® GE, building earthing

No part number



Cable entry earthing GE-D/L

length L (mm) GE-D	100	150	200	250	300	350	400	450	500
--------------------	-----	-----	-----	-----	-----	-----	-----	-----	-----



Earthing insulator GE-A/L

length L (mm) GE-A	100	150	200	250	300	350	400	450	500
--------------------	-----	-----	-----	-----	-----	-----	-----	-----	-----



Potential earthing GE-p

GE-p	120 mm long
------	-------------

Curaline® Accessories



Blind plug VS

Blind plug for Curaline® BKD 150

product	part number
VS 25 for BKD 150-D8/35/25	4 99 0 900 025 0 0
VS 35 for BKD 150-D8/35/25	4 99 0 900 035 0 0
VS 59 for BKD 150-D3/59	4 99 0 900 060 0 0

Blind plug for Curaline® KD 110

product	part number
VS 25 for KD 110-D7/32/25	4 99 0 900 025 0 0
VS 32 for KD 110-D7/32/25	4 99 0 900 032 0 0
VS 46 for KD 110-D3/46	4 99 0 900 046 0 0

Blind plug for Curaline® BKD 90

product	part number
VS 20 for BKD 90-D5/20	4 99 0 900 020 0 0
VS 30 for BKD 90-D3/30	4 99 0 900 030 0 0



Articulated spanner - GSS

Curaline® GSS

product	part number
GSS: Articulated spanner	4 99 0 920 000 0 0

finger shrouds for Curaline® BKD 150

product	system cap	cable-Ø (mm)	part number
AK 75-4F-29/8	D3/60	8 - 29	4 99 0 910 754 0 0
AK 75-3F-29/8	D3/60	8 - 29	4 99 0 910 753 0 0
AK 50-4F-20/5	D8/35/25	5 - 20	4 99 0 910 504 0 0
AK 50-3F-22/5	D8/35/25	5 - 22	4 99 0 910 503 0 0
AK 50-3F-22/5	D8/35/25	2 - 13	4 99 0 910 354 0 0
AK 35-3F-12/2	D8/35/25	2 - 12	4 99 0 910 353 0 0



finger shrouds AK

finger shrouds for Curaline® KD 110

product	system cap	cable-Ø (mm)	part number
AK 35-4F-13/2	D7/32/25	2 - 13	4 99 0 910 354 0 0
AK 35-3F-12/2	D7/32/25	2 - 12	4 99 0 910 353 0 0
AK 50-4F-20/5	D3/46	5 - 20	4 99 0 910 504 0 0
AK 50-3F-22/5	D3/46	5 - 22	4 99 0 910 503 0 0



finger shrouds AK

finger shrouds for Curaline® BKD 90

product	system cap	cable-Ø (mm)	part number
AK 35-4F-13/2	D3/30	2 - 13	4 99 0 910 354 0 0
AK 35-3F-12/2	D3/30	2 - 12	4 99 0 910 353 0 0

Curaline® BKD 150, battery assembled, in combination with fixed a. loose flange construction for constructions with tanking membranes or bituminous thick coating according to DIN 18195 T9 (see page 18)



BKD 150/7006/2x3/K

BKD 150 units, battery assembled in a flange plate, for constructions with tanking membranes, here with fixed and loose flange, leak-proof against pressing water.

Other variations e.g. with adhesive joint or leak-proof against non-pressing water upon request.

Available in galvanized¹⁾ version or in stainless steel. prices upon request.

Curaflam® Konfix^{Pro}, compact fire protection system for the sealing off of mixed installations on the Konfix connector

Curaflam® Konfix^{Pro}

- Fire protection in accordance with testing guidelines issued by DIBt "metal pipes with connections to plastic pipes" from 02/2012
- Approval Z-19.17-2074 from DIBt

Advantages:

- **space-optimised**
 - zero spacing to other pipes is positively tested - flammable and non-flammable pipes
- **simple installation**
 - up to 80% time saving during installation
 - simple bolted connection
 - no costly insulation necessary
- **slim and clever**
 - up to 35% space saving in opening
 - noise insulation up to 5 mm thick possible in slab opening
 - all sealing-off sizes can be made with only 2 sizes
 - retrofitting possible without opening floor slab

Please refer to the approval for further technical details.

installed Curaflam® Konfix^{Pro}

Curaflam® Konfix ^{Pro}			
nominal size	Cast-iron pipe		plastic pipe
	Branch nominal size*	Branch external -Ø* (mm)	External -Ø** (mm)
50	50	58	≤ 56
100	70	78	≤ 75
	75/80	83	≤ 90
	100	110	≤ 110

Dimensions

*) dimension in acc. w. DIN EN 877

**) Observe scope of Konfix connector

product	ND	part number
Curaflam® Konfix ^{Pro}	50	3 50 1 050 000 0 0
	100	3 50 1 100 000 0 0

Minimum order quantity: Packaging unit (VPE).

VPE ND 50: 6 no.

VPE ND 100: 8 no.

Scope of delivery: Curaflam® Konfix^{Pro} with clamp, fire protection plate and installation instructions (Konfix connector not included).

Curaflam® Mörtel^{Pro}, rapidly-hardening fire protection mortar

Curaflam® Mörtel^{Pro}

- Mortar for fire protection closing-off of wall and slab openings.
- Grouting of fire shutters, installation ducts, pipe leadthroughs and cable leadthroughs.
- Fire protection mortar MG III or mortar class M 10
- Re-closable plastic container with 15 kg content.

product	Inhalt	Artikelnummer
Curaflam® Mörtel ^{Pro}	15 kg	3 26 1 015 000 0 0

Minimum order quantity: Packaging unit (VPE) 24 no.

CurafLAM® Segment SM^{Pro}, can be compiled as module, universally applicable

Fire protection collar in acc. w. DIN 4102-11, R 90. For fire partitioning of flammable pipes



CurafLAM® Segment SM^{Pro}

Application areas

Plastic pipes made of: PVC, PP, PE-HD, LDPE, PP, PB, PE-X, ABS, ASA

Soand-insulating waste water pipes

- Geberit Silent PP
- Wavin Sitech
- Geberit Silent dB 20, Wavin AS, Friatec Friaphon Ostendorf Skolan, Rehau Raupiano Plus
- Multi-layer composite pipes with aluminium layer ≤ 1.7 mm thick
- Installation on inclined pipes, 2 x 45° bends
- with and without structure-born soand decoupling (PE) certified
- pipes in thermoplastic graphics in acc. w. DVGW Code of Practice G 600 (gas pipes)

OD ≤ 160 mm

OD ≤ 160 mm

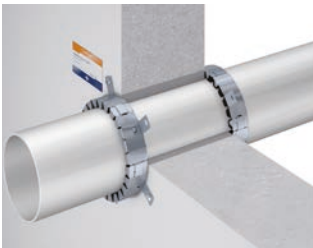
OD ≤ 110 mm

OD ≤ 110 mm

OD ≤ 160 mm

OD ≤ 110 mm

OD ≤ 63 mm

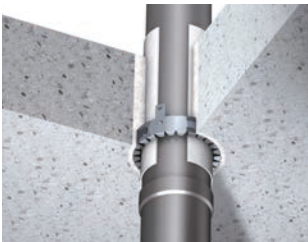


CurafLAM® Segment SM^{Pro} in the wall

Installing the collar:

- on both sides in front of walls made of aerated concrete, concrete, masonry and light partition walls (LPW) of thickness ≥ 100 mm
- on one side underneath concrete slabs of thickness ≥ 150 mm
- partially mortared-in collars possible in ceilings
- completely flush-mortared in solid slabs
- fitting to 2 x 45° bends through ceilings/walls

Please refer to the approval for further technical details. Approval CurafLAM® Segment SM^{Pro} collar has been approved by the German Institute of Structural Engineering (DIBt) in acc. w. Z-19.17-2067



CurafLAM® Segment SM^{Pro} in the ceiling

Pipe OD d [mm]	Number of segments for constructing a collar
32	1 x 3
40	1 x 3
50	1 x 3
58	1 x 4
63	1 x 4
75	1 x 4
78	1 x 4
90	1 x 5
110	1 x 5
125	2 x 6
135	2 x 6
140	2 x 6
160	2 x 7

Packaging unit CurafLAM® Segment SM^{Pro} in box

- 20 segments
- 4 designation plates
- 20 dowels
- 20 screws
- installation instruction

product	part number
CurafLAM® Segment SM ^{Pro}	3 28 1 020 000 0 0

Curafam® XS^{Pro} collar, universally usable, hinged fire protection collars in acc. w. DIN 4102-11, R 90 or in acc. w. EN1366-3: 2009, EI 90-U/U or EI 90-U/C

Curafam® collar XS^{Pro}

Application area in acc. w. DIN 4102-11

- Plastic pipes: PVC, PP, PE-HD, LDPE, PB, PE-X, ABS, ASA-Rohre OD ≤ 200 mm
- Soand-insulating waste water pipes OD ≤ 200 mm
 - Geberit Silent PP OD ≤ 110 mm
 - Wavin Sitech, Polo-Kal 3S OD ≤ 160 mm
- Geberit Silent dB 20, Wavin AS, Friatec Friaphon, Ostendorf Skolan, Rehau Raupiano Plus, Polo-Kal NG OD ≤ 200 mm
- Multi-layer composite pipes with aluminium layer ≤ 0.15 mm thick OD ≤ 110 mm
- installation on inclined pipes, pipe sleeves, E sleeves, CV connectors

Installing the collar:

- on both sides in front of walls made of aerated concrete, concrete, masonry and light partition walls (LPW) of thickness ≥ 100 mm
- on one side underneath concrete slabs of thickness ≥ 150 mm
- completely flush-mortared in solid slabs
- installation on pipe sleeves with 45° bending through ceiling

Approval

Curafam® XS^{Pro} collar is approved by the German Institute of Structural Engineering (DIBt) in acc. w. Z-19.17-1983.

Application area in acc. w. EN 1366-3

- Plastic pipes: OD ≤ 315 mm
- Plastic pipes positively tested to OD ≤ 450 mm

Approval

- - ETA-11/0498

Please refer to the approval for further technical details.

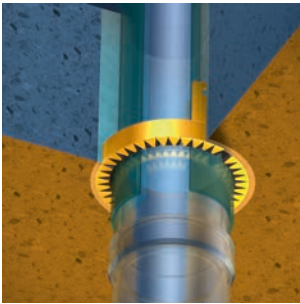
Curafam® collar XS^{Pro}

for outside pipe diameters of	part number
1-34	3 22 1 032 000 0 0
35-42	3 22 1 040 000 0 0
43-52	3 22 1 050 000 0 0
53-65	3 22 1 063 000 0 0
66-77	3 22 1 075 000 0 0
78-92	3 22 1 090 000 0 0
93-112	3 22 1 110 000 0 0
113-125	3 22 1 125 000 0 0
126-140	3 22 1 140 000 0 0
141-160	3 22 1 160 000 0 0
161-180	3 22 1 180 000 0 0
181-200	3 22 1 200 000 0 0
225	3 22 1 225 000 0 0
250	3 22 1 250 000 0 0
280	3 22 1 280 000 0 0
315	3 22 1 315 000 0 0

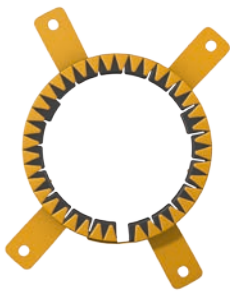
Delivery and prices incl. fire protection plate, noise insulation film, fixing material, installation instructions

The Curafam® XS^{Pro} collar is available for outside pipe diameters up to 450 mm. Prices on request.

Curaflam® ECO^{Pro} collar, hinged fire protection collar in acc. w. DIN 4102-11, R 90. For fire partitioning of flammable pipes



Curaflam® collar Eco^{Pro}



Application areas

- Plastic pipes: PVC, PP, PE-HD, LDPE, PB, PE-X, ABS, ASA pipes OD ≤ 160 mm
- Soand-insulating waste water pipes OD ≤ 160 mm
- Geberit Silent PP OD ≤ 110 mm
- Geberit Silent dB 20, Wavin Sitech, Wavin AS, Friatec Friaphon, Ostendorf Skolan, Rehau Raupiano Plus OD ≤ 160 mm
- Multi-layer composite pipe
- with aluminium layer ≤ 0.15 mm OD ≤ 110 mm
- made of PEX for the transport of flammable gases with aluminium layer ≤ 0.15 mm OD ≤ 63 mm
- installation on pipes, pipe sleeves, E sleeves, CV connectors

Installing the collar

- on both sides in front of walls made of aerated concrete, concrete, masonry and light partition walls (LPW) of thickness ≥ 100 mm
- on one side underneath concrete slabs of thickness ≥ 150 mm
- completely flush-mortared in solid slabs
- installation on pipe sleeves with 45° bending through ceiling

Please refer to the approval for further technical details.

Approval

Curaflam® Eco^{Pro} collar is approved by the German Institute of Structural Engineering (DIBt) in acc. w. Z-19.17-1989.

Curaflam® collar ECO^{Pro}

for outside pipe diameters of	part number
1-34	3 231 032 000 0 0
35-42	3 231 040 000 0 0
43-52	3 231 050 000 0 0
53-65	3 231 063 000 0 0
66-77	3 231 075 000 0 0
78-92	3 231 090 000 0 0
93-112	3 231 110 000 0 0
113-125	3 231 125 000 0 0
126-140	3 231 140 000 0 0
141-160	3 231 160 000 0 0

Delivery and prices incl. fire protection plate, installation instruction

Accessories

Curaflam® noise insulation films for fire protection collars
5 no. in set Dimensions: 420 x 300 x 3 mm, with glued strips

product	Quantity	part number
Curaflam® noise insulation film (with glued strips)	5 no.	3 99 0 701 005 0 0

Curaflam® Rollit / Curaflam® Rollit LAR, fire protection winding tape for flammable pipes ($\varnothing \leq 32$ mm) and non-flammable pipes ($\varnothing \leq 160$ mm). Tested fire protection (Z 19.11-1211) in acc. w. MLAR / LAR / RbAlci



Application area (in acc. w. sample pipes guidelines)

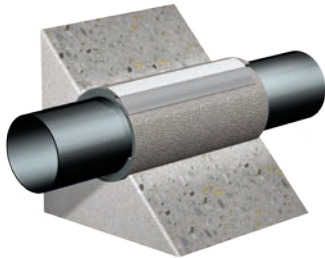
4.2 Easements for fire-retardant walls (F 30)

- Electrical cables without diameter liwathation
- cable bundle up to $\varnothing \leq 100$ mm diameter (in acc. w. comment on MLAR 2005)
- non-flammable pipes, also with flammable pipe coatings up to 2 mm thick without diameter liwathation

4.3 Easements for walls and ceilings (F 30, F 60, F 90)

- Electrical cables without diameter liwathation
- non-flammable pipes up to $\varnothing 160$ mm (except aluminium and glass) also with flammable pipe coatings up to 2 mm thick
- flammable pipes for non-flammable media or cables (installation pipes) $\varnothing \leq 32$ mm

Minimum structural thickness for F 90 = 80 mm.



Curaflam® Rollit

pipe OD d [mm]	Tape length [mm]	Curaflam® Rollit: width 200 mm. per sales unit (SU)		Curaflam® Rollit LAR: width 80 mm. per sales unit (SU)
		SU with 10 m (Rollit Box)*	SU with 1.10 m (Rollit Pack)*	SU with 2,00 m
≤ 38	140	71	7	14
≤ 58	200	50	5	10
≤ 78	270	37	4	7
≤ 110	360	27	3	5
≤ 135	440	22	2	4
≤ 160	520	19	2	3

Consumption quantities Curaflam® Rollit / Curaflam® Rollit LAR

*) Soandproofing tested to DIN 4109; Soandproofing test report P-BA 146/2010

Curaflam® Rollit Box

Rollit in practical storage box with 10 m of winding tape, incl. 30 glued strips and 15 designation plates, installation instructions.



Curaflam® Rollit Box

product	length	part number
Curaflam® Rollit Box	10 m	3 24 0 000 000 0 2

Curaflam® Rollit pack

Curaflam® Rollit in practical consumer unit with 1.10 m winding tape, incl. 3 designation plates, installation instructions.



Curaflam® Rollit Pack

product	length	part number
Curaflam® Rollit Pack	1,10 m	3 24 0 001 100 0 0

Curaflam® Rollit LAR bag

Can be supplied in practical LAR roll size 80 mm width and 2 m length.



Curaflam® Rollit LAR

product	length	part number
Curaflam® Rollit LAR Tape	2 m	3 35 0 002 000 0 0

Accessories

Aluminium adhesive tape for fixing Curaflam® Rollit / Rollit LAR windings

product	length	part number
Aluminium adhesive tape	25 m	-
	50 m	-
	100 m	-

Curafam® Rollit BBR^{Pro}, fire protection winding tape for flammable pipes, in acc. w. DIN 4102-11, R 90 / R 120



Curafam® Rollit BBR^{Pro}

Application areas

For fire partitioning of flammable pipes:

- PVC; PE; PP; ABS; ASA; PE-X; PB up to outside pipe $\varnothing \leq 110$ mm
- Plastic composite pipes ≤ 110 mm

for the following trades

- heating, refrigeration, drinking water

Installation of winding tape

- both sides with projection:
 - light partition walls of thickness < 150 mm: projection 75 mm
 - solid walls of thickness < 150 mm: projection 75 mm
 - solid walls of thickness ≥ 150 mm: projection 50 mm
 - solid ceilings of thickness ≥ 150 mm: projection 50 mm
- retrospective installation in front of wall is possible, ensure jacketing is made of sheet metal!

Approved for the following insulation types:

- synthetic rubber of 6 mm - 32 mm thickness

Please refer to the approval for further technical details.

Approval

Curafam® Rollit BBR^{Pro} is approved in acc. w. general building regulation approval Z-19.17-1935.

Overall outside diameter (pipe and insulation) [mm]	Consumption quantities [mm] (installation both sides)	Number of layers
32	460	2
40	560	
50	700	
63	860	
75	1000	
90	1200	
110	1440	
125	1640	
140	1820	
160	2080	
174	2260	

Consumption quantities and number of layers for Curafam® Rollit BBR^{Pro}



Curafam® Rollit BBR^{Pro} Box

Curafam® Rollit BBR^{Pro} Box

Curafam® Rollit BBR^{Pro} in the practical storage box with 10 m winding tape, 125 mm wide, incl. 10 designation plates, fixing wire, installation instructions.

product	length	part number
Curafam® Rollit BBR ^{Pro} Box	10 m	3 44 1 000 000 0 2



Curafam® Rollit BBR^{Pro} pack

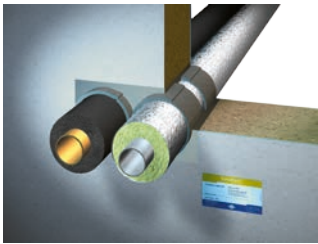
Curafam® Rollit BBR^{Pro} pack

Curafam® Rollit BBR^{Pro} in the practical consumption unit with 2.50 m winding tape, 125 mm wide, incl. 4 designation plates, fixing wire, installation instructions.

product	length	part number
Curafam® Rollit BBR ^{Pro} pack	2,50 m	3 44 1 002 500 0 0



Curafam® Rollit ISO^{Pro}, fire protection winding tape for non-flammable insulated pipes, in acc. w. DIN 4102-11, R 30/R 90

Curafam® Rollit ISO^{Pro}

Application areas

for sealing-off on-flammable insulated pipes

- steel, cast iron up to OD ≤ 813 mm*
 - stainless steel pipes up to OD ≤ 813 mm*
 - copper pipes up to OD ≤ 88.9 mm
- *applies to solid walls/ceilings, LPW max. ≤ 219 mm pipe OD

Installation conditions:

- Pipes lead through walls/ceilings and light partition walls of thickness ≥ 80 mm.
- Spacing rules contained in MLAR 03/00 and 11/05 must be observed.

Approved for the following insulation types:

- PU up to insulation thickness ≤ 100 mm [B1, B2]
- synthetic rubber up to insulation thickness ≤ 100 mm [B1, B2]
- mineral wool, glass wool with melting point ≥ 500 °C up to insulation thickness ≤ 100 mm [A]
- foamed glass up to insulation thickness ≤ 100 mm [A]

Installation instructions

- Wall installation:
 - both sides in walls made of aerated concrete, concrete, masonry of thickness ≥ 150 mm. At least 50 mm of the tape must protrude from the wall on both sides.
 - retrospective installation in front of wall is possible, ensure jacketing is made of sheet metal!
 - Both sides in light partition walls (LPW) of fitness ≥ 75 mm. At least 75 mm of the tape must protrude from the wall on both sides. Ensure there is protective insulation on both sides!
- Ceiling installation:
 - both sides in ceilings made of aerated concrete, concrete of thickness ≥ 150 mm. At least 50 mm of the tape must protrude from the wall on both sides.
 - retrospective installation underneath and on top of the ceiling as possible, ensure jacketing is made of sheet metal!
- Installation with "zero spacing": bulkheads on the corresponding pipes may contact each other.

Please refer to the application certification for further technical details.

Test certification

Curafam® Rollit ISO^{Pro} is tested in accordance with the general building authority test certificates P-3222/9781-MPA BS and P-3637/8902-MPA BS.

Further application in accordance with sample cable equipment guidelines (MLAR) 03/00 and 11/05 for

- Flammable pipes of OD ≤ 32 mm: e.g. PB, PE, PVC, composite and ducting for electrical cables
- Non-flammable pipes of OD ≤ 160 mm e.g. made of copper, steel, cast iron

Total outside diameter (pipe + insulation) [mm]	53	66	85	90	115	125	137	190	215	230	250	260	285	310	315	335	345
Recommended core bores diameter	100	125	150	150	200	200	200	250	300	300	350	350	350	400	400	400	400
Required tape length [mm] per leadthrough for pipes of insulation made of																	
- PU, synthetic rubber, foamed glass (dual-layer wrapping, overlapping not stipulated)	760	920	1160	1220	1540	1660	1800	2480	2780	2980	3220	3360	3660	3980	4040	4300	4420
- mineral wool, glass wool (single-layer incl. overlapping)	500	580	700	720	960	1020	1100	1440	1700	1780	1920	1980	2140	2300	2320	2440	2520

Consumption quantities for Curafam® Rollit ISO^{Pro}

Curafam® Rollit ISO^{Pro} Box

Curafam® Rollit ISO^{Pro} Box

Curafam® Rollit ISO^{Pro} in the practical storage box with 10 m of winding tape, 125 mm width; incl. 10 designation plates, fixing wire, installation instructions.

product	length	part number
Curafam® Rollit ISO ^{Pro} Box	10 m	3 34 1 000 000 0 2

Curafam® Rollit ISO^{Pro} pack

Curafam® Rollit ISO^{Pro} pack

Curafam® Rollit ISO^{Pro} in the practical storage box with 2.5 m of winding tape, 125 mm width; incl. 4 designation plates, fixing wire, installation instructions

product	length	part number
Curafam® Rollit ISO ^{Pro} pack	2,50 m	3 34 1 002 500 0 0

Curaflam® Inject BS^{Pro}, fire protection sealing material for flammable and non-flammable pipes in practical cartridge



Curaflam® Inject BS^{Pro}

Application area

Application in acc. w. sample cable equipment guidelines (MLAR) 03/00 & 11/05

for

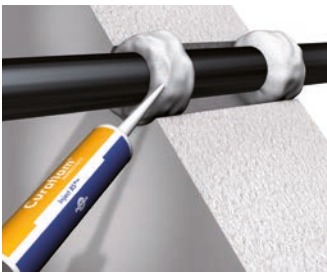
- Single electric cables: e.g. power cables, telephone cables, EDP cables, glassfibre cables
- Flammable pipes of OD ≤ 32 mm: e.g. PP, PE, PVC, composite pipes, ducting for electrical cables
- Non-flammable pipes up to OD ≤ 160 mm: materials e.g. copper, steel, stainless steel, C-steel, cast iron

Installation conditions:

- Pipes lead through walls/ceilings of thickness ≥ 80 mm.
Can also be used in like partition walls, but with non-flammable sleeve pipe
- Spacing rules contained in MLAR 03/00 and 11/05 must be observed.

Approval

Curaflam® Inject BS^{Pro} is approved by the German Institute of Structural Engineering (DIBt) in acc. w. Z-19.11-2102



Curaflam® Inject BS^{Pro}

Material consumption

Piping outside diameter [mm]	1 - 32	33 - 63	64 - 110	111 - 160
approx. material consumption (infilled 25 mm on both sides, annular gap 25 mm)	approx. 1/4 cartridge	approx. 1/2 cartridge	approx. 3/4 cartridge	approx. 1 cartridge



Curaflam® Inject BS^{Pro} in practical dual pack

product	capacit	part number
Curaflam® Inject BS ^{Pro} in practical dual pack, additional 2 designation plates	2 x 300 ml	3 25 1 000 002 0 0

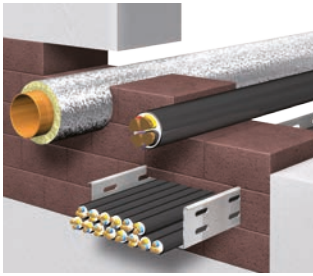


Curaflam® Inject BS^{Pro} in inexpensive 3x dual pack

product	capacit	part number
Curaflam® Inject BS ^{Pro} in inexpensive 3x dual pack, additional 6 designation plates	6 x 300 ml	3 25 1 000 006 0 0

CurafLAM® brick fire protection system

Fire bulkhead system for sealing off of cables in acc. w. DIN 4102-9, S 30 / S 60 / S 90, for cables of all types and diameters



CurafLAM®-Steine

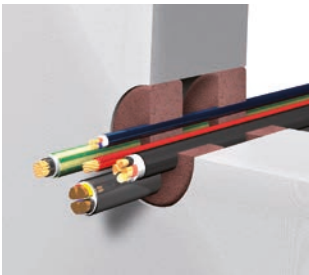
Approved by the German Institute of Structural Engineering (DIBt) in acc. w. Z-19.15-1869.

Please refer to the general building regulation approval for details of S 30 and S 60

product	part number
CurafLAM® brick (170 x 120 x 60 mm)	3 60 0 170 120 0 0
Packaging unit 15 CurafLAM® bricks, incl. 2 designation plates, installation instructions (CurafLAM® cable filler not included)	3 60 3 170 120 1 5
CurafLAM® cable filler	3 65 0 000 000 0 0
CurafLAM® brick bulkhead system fire protection plate	3 69 0 000 000 0 1

CurafLAM® plug fire protection system

Fire bulkhead system for sealing off of cables in acc. w. DIN 4102-9, S 30 / S 60 / S 90, for cables of all types and diameters



CurafLAM® plugs

Approved by the German Institute of Structural Engineering (DIBt) in acc. w. Z-19.15-1867.

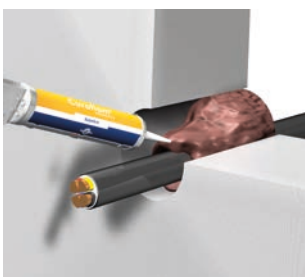
Please refer to the general building regulation approval for details of S 30 and S 60.

product	diameter [mm]	part number
2 CurafLAM® plugs, incl. 1 fire protection plate (CurafLAM® cable filler not included)	65	3 61 0 065 000 0 0
	78	3 61 0 078 000 0 0
	107	3 61 0 107 000 0 0
	122	3 61 0 122 000 0 0
	134	3 61 0 134 000 0 0
	165	3 61 0 165 000 0 0
	200	3 61 0 200 000 0 0
	250	3 61 0 250 000 0 0

product	part number
Set CurafLAM® System bulkhead plugs for LPW, consisting of - 2 CurafLAM® plugs, incl. fire protection plate - CurafLAM® sleeve OD 144 mm x 150 mm (2-piece) - 1 cartridge CurafLAM® cable filler	3 61 0 144 150 0 3
CurafLAM® plug bulkhead system fire protection plate	3 69 0 000 000 0 1

CurafLAM® fire protection system cable filler

Fire protection system for sealing off of cables in acc. w. DIN 4102-9, S 30 / S 60 / S 90, for cables of all types and diameter



CurafLAM® cable filler

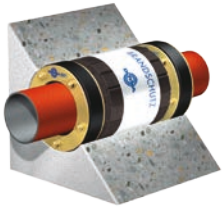
Approved by the German Institute of Structural Engineering (DIBt) in acc. w. Z-19.15-1868.

product	part number
CurafLAM® cable filler, incl. fire protection plate, installation Instructions	3 65 0 000 000 0 0
CurafLAM® sleeve for LPW (OD 80 x 100 mm)	3 65 0 080 100 0 0

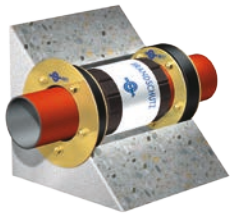
Please refer to the relevant certification for further technical details

CurafLAM® fire protection in combination with gasket inserts

Flammable pipes in acc. w. DIN 4102-11, R 90, BSHB series, in acc. w. general building regulation approval Z-19.17-324



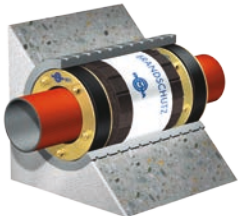
CurafLAM® 2 x A BSHB



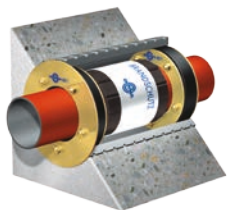
CurafLAM® A + B BSHB

Diameter of core bores [mm]	Pipe outside diameter [mm]	precise outside diameter [mm] xxx	CurafLAM® 2 x A BSHB	CurafLAM® A+B BSHB
			part number	part number
80	1-40	012	3 07 7 xxx 080 0 0	3 08 7 xxx 080 0 0
		020		
		025		
		032		
		040		
100	41-57	042	3 07 7 xxx 100 0 0	3 08 7 xxx 100 0 0
		050		
		056		
125	58-77	063 075	3 07 7 xxx 125 0 0	3 08 7 xxx 125 0 0
150	78-104	078 090	3 07 7 xxx 150 0 0	3 08 7 xxx 150 0 0
200	105 - 124	110	3 07 7 xxx 200 0 0	3 08 7 xxx 200 0 0
	125 - 145	125 140	3 07 7 xxx 200 0 0	3 08 7 xxx 200 0 0
250	146-180	160 180	3 07 7 xxx 250 0 0	3 08 7 xxx 250 0 0
300	200	200* 225*	3 07 7 xxx 300 0 0	3 08 7 xxx 300 0 0
350	250	250* 280*	3 07 7 xxx 350 0 0	3 08 7 xxx 350 0 0
400	315	315*	3 07 7 xxx 400 0 0	3 08 7 xxx 400 0 0

* only for district heating pipes



CurafLAM® 3110 BSHB



CurafLAM® 3210 BSHB

Diameter of core bores [mm]	Pipe outside diameter [mm]
80	1-40
100	41-57
125	58-77
150	78-104
200	105 - 124
	125 - 145
250	146-180
300	200*
	225*
350	250*
	280*
400	315*

* only for district heating pipes

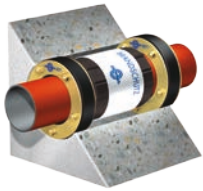
Length 300 mm. Delivery and prices are including fire protection plate, available up to max. Tube outside diameter 180 mm

Above wall thickness > 400 mm you will require 2 fire protection packs (price on request).

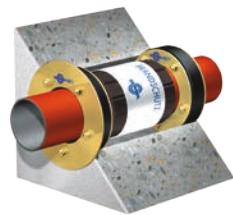
We can also supply multiple leadthroughs for fire protection. Diameters and prices on request. Please refer to the relevant application certification for further technical details.

CurafLAM® fire protection in combination with gasket inserts

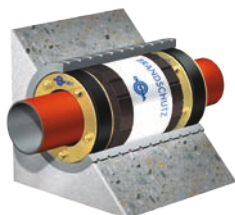
Flammable pipes in acc. w. DIN 4102-11, R 90/ R 120, BSHN series, in acc. w. general building regulation approval P-3024/0148



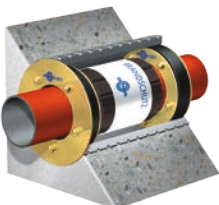
CurafLAM® 2 x A BSHN



CurafLAM® A + B BSHN



CurafLAM® 3110 BSHN



CurafLAM® 3210 BSHN

Diameter of core bores [mm]	Pipe outside diameter [mm]	precise outside diameter [mm] xxx	CurafLAM® 2 x A BSHN	CurafLAM® A + B BSHN
			part number	part number
80	1-40	012	3 07 8 xxx 080 0 0	3 08 8 xxx 080 0 0
		018		
		022		
		035		
		042		
100	41-57	048	3 07 8 xxx 100 0 0	3 08 8 xxx 100 0 0
		054		
		060		
125	58-77	076	3 07 8 xxx 125 0 0	3 08 8 xxx 125 0 0
		078		
150	78-104	089	3 07 8 xxx 150 0 0	3 08 8 xxx 150 0 0
		102		
		110		
200	105 - 124	118	3 07 8 xxx 200 0 0	3 08 8 xxx 200 0 0
	125 - 145	135		
250	146-180	144	3 07 8 xxx 250 0 0	3 08 8 xxx 250 0 0
		148		
		160		
		170		
		180		
300	191 - 233	210	3 07 8 xxx 300 0 0	3 08 8 xxx 300 0 0
		222		
350	234 - 288	242	3 07 8 xxx 350 0 0	3 08 8 xxx 350 0 0
		273		
400	289 - 339	296	3 07 8 xxx 300 0 0	3 08 8 xxx 300 0 0
		326		
450	340 - 380	356	3 07 8 xxx 350 0 0	3 08 8 xxx 350 0 0
		378		
500	381 - 406	406	3 07 8 xxx 400 0 0	3 08 8 xxx 400 0 0

Diameter of core bores [mm]	Pipe outside diameter [mm]
80	1-40
100	41-57
125	58-77
150	78-104
200	105 - 124
	125 - 145
250	146-180
300	191 - 233
350	234 - 288
400	289 - 339
450	340 - 380
500	381 - 406

Length 300 mm. Delivery and prices are including fire protection plate, available up to max. Tube outside diameter 406 mm.

In the case of non-flammable pipes, insulation with mineral wool A1 is prescribed on both sides (to be applied on site). R 90/R 120:

Thickness: 80 mm

Length: 700 mm

Density: 80 kg/m³

Above wall thickness > 400 mm you will require 2 fire protection packs (price on request). Please refer to the relevant application certification for further technical details.

We can also supply multiple leadthroughs for fire protection. Diameters and prices on request.

CurafLAM® fire protection for dry rooms in acc. w. DIN 4102-11

12.500 BSRB: for flammable pipes (Z-19.17-416, R 90); 12.500 BSRN: for nonflammable pipes (P-3025/0158, R 90/R 120)



CurafLAM® 12.500 BSRB



CurafLAM® 12.500 BSRN

ND socket pipe [mm]	Pipe outside diameter [mm]	CurafLAM® 12.500 BSRB part number 3 12 7 xxx 300 0 0
		xxx
42	12	012
	16	016
	17,6	017
	20	020
	21,6	021
	25	025
	26,8	026
51	32	032
	33,8	033
61	40	040
	42	042
85	50	050
	52	052
	56	056
	58	058
	60	060
	63	063
	65	065
106	70	070
	75	075
	77	077
	78	078
121	80	080
	85	085
	90	090
	92	092
155	108	108
	110	110
	112	112
175	125	125
	132	132
	135	135
	140	140

ND socket pipe [mm]	Pipe outside diameter [mm]	CurafLAM® 12.500 BSRN part number 3 12 8 xxx 300 0 0
		xxx
42	12	012
	15	015
	17,2/18	018
	21,3/22	022
	26,9	027
	28	028
	51	33,7
35		035
61	42	042
	48	048
85	54	054
	56 / 57	057
	58	058
	60	060
	63	063
106	76	076
	78	078
121	88,9	089
	98	098
	104	104
	108	108
155	110	110
	114,3	114
	133	133
	135	135
	139,7	140
175	144	144
	159	159
	160	160

Length 300 mm. Delivery and prices are including fire protection plate.

In the case of non-flammable pipes, insulation with mineral wool A1 is prescribed on both sides (to be applied on site). R 90/R 120:

Thickness: 80 mm
 Length: 700 mm
 Density: 80 kg/m³

Above wall thickness > 400 mm you will require 2 fire protection packs (price on request).

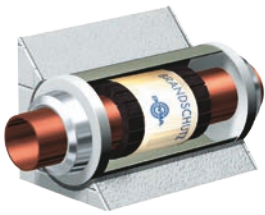
We can also supply multiple leadthroughs for fire protection. Diameters and prices on request. Please refer to the relevant application certification for further technical details.

Curafam® fire protection for dry rooms/wet rooms in acc. w. DIN 4102-11

49.950 BSRB: for flammable pipes (Z-19.17-416, R 90); 49.950 BSRN: for nonflammable pipes (P-3025/0158, R 90/R 120)



Curafam® 49.950 BSRB



Curafam® 49.950 BSRN

ND socket pipe [mm]	Pipe outside diameter [mm]
29	5-6
	8
	10
	12
37	14
51	16
	17,6
	20
	21,6
66	25
76	26,8
	32
85	33,8
	40
98	42
	45
110	50
	52
	56
	58
130	60
	63
	65
	70
146	75
	77
	78
	80
	85
	90

ND socket pipe [mm]	Pipe outside diameter [mm]
29	5-10
	11-13
37	15
51	16-18
	20
	21-22
66	26,9
	27-28
76	32-33
	35
85	38
	39-40
	42
98	44
	45
	48
110	50
	52
	54
	56
	57
	58
130	60
	63
	71
146	76
	78
	82
	86
	88,9
	90

Length 300 mm. Delivery and prices are including fire protection plate.

In the case of non-flammable pipes, insulation with mineral wool A1 is prescribed on both sides (to be applied on site). R 90/R 120:

Thickness: 80 mm

Length: 700 mm

Density: 80 kg/m³

Above wall thickness > 400 mm you will require 2 fire protection packs (price on request).

We can also supply multiple leadthroughs for fire protection. Diameters and prices on request. Please refer to the relevant application certification for further technical details.

Additional designation plates

designation plate for product	part number
Curafam® collar XS ^{pro}	3 22 1 000 000 0 1
Curafam® collar Eco ^{pro}	3 23 1 000 000 0 1
Curafam® Segment SM ^{pro}	3 28 1 000 000 0 1
Curafam® Konfix ^{pro}	3 50 1 000 000 0 1

designation plate for product	part number
Curafam® Rollit BBR ^{pro}	3 44 1 000 000 0 1
Curafam® Rollit ISO ^{pro}	3 34 1 000 000 0 1
Curafam® Rollit	3 24 0 000 000 0 1
Curafam® Rollit LAR	3 35 0 000 000 0 1

designation plate for product	part number
Curafam® - plug	3 69 0 000 000 0 1
Curafam® - brick	3 69 0 000 000 0 1
Curafam® - cable filler	3 69 0 000 000 0 1
Curafam® Inject BS ^{pro}	3 25 1 000 000 0 1

designation plate for product	part number
Curafam® BSHB	3 00 7 000 000 0 1
Curafam® BSHN	3 00 8 000 000 0 1
Curafam® BSRB	3 11 7 000 000 0 1
Curafam® BSRN	3 11 8 000 000 0 1



Certificate

As an extension to the statutory rights of the customer, DOYMA guarantees the correct functioning of your DOYMA product for 25 years from the date of its purchase. The effective date for validity is 01.01.2007. However, should the DOYMA product fail to function correctly during this time as a result of a product defect and consequential damage occurs, then DOYMA will:

- Replace the defective DOYMA product.
- Reimburse the required installation and removal costs following prior agreement with DOYMA up to a maximum amount of 10,000 €. DOYMA reserves the right to carry out the work, which is necessary within the framework of the maximum amount, themselves or to have it carried out by a DOYMA approved third party.
- Reimburse the cost of all property damage incurred as a consequence of the defective DOYMA product, in particular damage to your property that has been caused by the ingress of water, and repair work that has become necessary, in particular drying, painting and masonry work, following prior agreement with DOYMA, up to a maximum amount of 100,000 € in each individual case, in so far as the damage was foreseeable by DOYMA; DOYMA reserves the right to carry out the work required for the rectification of the damage themselves or to have it carried out by a DOYMA approved third party.

This guarantee is only applicable when the actual DOYMA product itself is defective, and is therefore not applicable when the failure of the DOYMA product has occurred as a result of the product having been installed or used in a manner which is contrary to established engineering principles in the construction industry and particularly DOYMA application and installation guidelines; it also does not apply when the failure of the DOYMA product is related to damage to the product sustained prior to, during or post installation howsoever caused. Should you be unable to refute a substantiated objection from DOYMA, that one of the grounds for exclusion outlined here is applicable, then the rights of the guarantee will be void.

A prerequisite for making a claim under this guarantee is the submission of the original purchase invoice for the DOYMA product involved in the complaint, without this the rights contained in this guarantee are unenforceable. The original purchase invoice together with full details of the complaint must be addressed to:

DOYMA GmbH & Co
 Industriestrasse 43-57
 D-28876 Oyten
 Fax: 0049 (4207) 91 66-199

The scope of this guarantee is restricted to the area of the European Union and Switzerland. Should you have purchased or used the DOYMA product outside the European Union or Switzerland, then this guarantee is void and you are referred to the statutory rights.

For all legal relations between DOYMA and you resulting from this guarantee agreement only the authoritative law at our registered office (German law) will apply, with the exclusion of foreign law, for the legal relations of domestic parties; the validity of the UN Convention on Contracts for the International Sale of Goods (CISG) is excluded.

For all disputes relating to this guarantee the sole place of jurisdiction will be Oyten, in the Federal Republic of Germany.

The original text can be found in German on the Internet at www.doyma.de. We cannot accept responsibility for errors made in translation.

General Sales Terms and Conditions of DOYMA GmbH & Co, Oyten

§ 1 General/scope

- Our Sales Terms and Conditions apply exclusively and apply to all our offers, sales, deliveries of products and rendering of services. If the Customer is not able to read these Terms and conditions upon the conclusion of an Agreement, these shall apply anyway if the Customer was aware of or should have been aware of these Terms and Conditions from previous transactions.
- We shall not recognise any sales terms and conditions of the Customer which differ from our Sales Terms and conditions. If we carry out a delivery of products or render services we are charged with, this shall not be tantamount to our recognition of such terms and conditions of the Customer which do not contradict our Sales Terms and Conditions, either.
- Our Sales Terms and Conditions shall only apply to businesspersons in the meaning of § 310 of the German Civil Code, which is to say these Sales Terms and Conditions do not apply when the order placed by the Customer cannot be attributed to its commercial or independent occupational activity (consumer as stipulated in § 13 of the German Civil Code).
- No subsidiary oral Agreements have been made. Any and all future amendments to this Agreement must be in writing; this also applies to the revocation of the writing requirement. Our staff working in the field shall not be entitled to verbally revoke this written form. Any amendments shall therefore only take effect when such are confirmed by the management or our Sales Department in writing.

§ 2 Offer - Conclusion of Agreement

- Our offers are subject to change if nothing otherwise is stipulated.
- If the order placed by the Customer constitutes an offer to conclude an Agreement, we may accept such within a period of 10 days.
- We retain all property rights and copyrights to illustrations and diagrams, drawings, calculations and other documents. This shall apply in particular to those written documents which are labelled "confidential". The Customer may only pass such written documents on to third parties with our express written consent.

§ 3 Price - terms and conditions of payment

- If nothing to the contrary has been agreed upon, these prices apply ex warehouse or ex works including packaging, freight, insurance, postage and all other special or subsidiary services agreed upon shall be charged in addition at appropriate prices. This shall also apply when the Customer orders special packaging or a special consignment.
- Our staff shall only be entitled to collect payment if our management has provided the Customer prior written confirmation of such.
- payment by the Customer shall be due immediately. The Customer shall be notified that the Customer must effect payment no later than 30 days after receipt of the invoice. If the Customer comes into arrears on payment, the Customer shall be obliged to pay a flat sum of € 1.50 to cover expenses for each (additional) admonishment.
- The Customer may only set off amounts if claims on the part of the Customer have been recognized by a court of law, are undisputed or we have recognized such.
- We shall be entitled to exercise a right of retention on all receivables emanating from the business relationship with the Customer.

§ 4 Delivery - delivery period

- The commencement of the delivery period which we have stated shall be subject to all technical issues being resolved and the due and proper fulfillment of the obligations of the Customer. We retain the right to plan non-fulfillment of Agreement.
- Force majeure or disruptions in the operations of our enterprise or our suppliers, for instance as a result of insurrection, strikes, lock-outs which temporarily prevent us from supplying the object of purchase by the agreed-upon date or within the agreed-upon periods shall change the delivery periods or delivery dates stated by us by the same amount of time as the disruption in performance caused by such circumstances. If a respective disruption leads to a postponement of performance of more than 2 months, the Customer shall be entitled to withdraw from the Agreement.
- If a concrete object is not the subject of the Agreement, we shall be obligated to supply an object of medium type and quality from the stipulated category. This obligation to produce such an object shall be limited to the stocks in our warehouse or goods from our production. If we do not produce the stipulated goods or we have not yet taken delivery of such, we shall retain the right to supply ourselves. This shall apply accordingly in the effect of a sale of ascertained goods with respect to goods which we have not yet received title to. We shall not be responsible for failure to deliver on the part of one of our suppliers which we are not responsible for. This shall also apply in the event of one of our suppliers being late in effecting delivery for which we are not responsible.
- We retain the right to make changes in design or shape, changes in the colour or changes in the scope of delivery on the part of the manufacturer during the delivery period if the object of purchase is not significantly changed and the Customer can be reasonably expected to accept such change.
- We retain the right to charge a minimum quantity price in the case of very small quantities.

§ 5 Delay in delivery

- We shall be liable for delay in accordance with statutory provisions - if the purchase Agreement upon which such delivery is based constitutes a fixed-date purchase in the meaning of § 361 of the German Civil Code and § 376 of the German Commercial Code if the delay in delivery for which we are responsible causes the Customer to lose interest in the additional fulfillment of the Agreement or if the delay in delivery is based on a violation of the Agreement through wilful intent or gross negligence for which we are responsible. The same shall apply to culpability on the part of our representatives or parties hired by us to carry out the Agreement.
- We shall be liable in accordance with statutory provisions, but limited to foreseeable damage which typically occurs - if the delay in delivery is based on a violation of the Agreement through wilful intent or gross negligence for which we are responsible, or if the delay in delivery for which we are responsible is based on a violation of an important contractual obligation due to minor negligence.
- If our delay in delivery is merely due to culpable violation of a contractual obligation which is not important, the claim of the Customer shall be limited to 20% of the value of the delivery.

§ 6 Jeopardised performance/insolvency

- If after conclusion of the Agreement we are able to recognise that the (additional) fulfillment of the Agreement is jeopardised by deficient performance on the part of the Customer, we shall be entitled to refuse to render advance services under this Agreement until the Customer causes the respective counter-performance to be rendered or provides collateral for such.
- We shall be entitled to withdraw from the Agreement or to terminate such without notice if the Customer fails to render counter-service contemporaneously in spite of a reasonable grace period or to provide collateral.
- If the Customer is insolvent or excessively in debt, or if a petition is filed to open an insolvency or a debt composition proceeding on the Customer are opened, we shall be entitled to withdraw from the Agreement or to terminate the Agreement without notice without setting a grace period.
- If we terminate or withdraw from the Agreement in accordance with sections 2 or 3, we may demand compensation from the Customer instead of performance or reimbursement of expenses.

§ 7 Acceptance

- The Customer shall be obligated to undertake fulfillment of the Agreement through the actions required by us, and in particular to accept the object. If the Customer violates this obligation and cannot demonstrate that he has not acted culpably, the Customer shall be obligated to reimburse us for any damage, in particular additional expenses, which we incur as a result thereof. We retain the right to forward additional claims.
- If the Customer is more than 14 days late in providing acceptance of the object of purchase beginning with the receipt of notification of readiness for acceptance or the duly effected initial delivery by ourselves, we may set the Customer a grace period of 14 days and declare that we shall refuse to accept the object of purchase after the expiry of this period. If the grace period expires without the Customer complying with such demand, we shall be entitled to withdraw from the purchase Agreement through written declaration or to demand compensation for non-performance. It shall not be necessary to set a grace period if the Customer with serious intent permanently refuses acceptance or is obviously unable to pay the purchase price even if a grace period is granted. In such case we shall be entitled to demand a flat sum of 10% of the agreed-upon purchase price for foregone profit. The Customer shall retain the right, however, to demonstrate that we have not incurred any damage or that we have only incurred less damage. We shall also retain the right to demonstrate that we have incurred greater damage and claim for such.

§ 8 Shipping - transfer of risk

- If nothing to the contrary emanates from the confirmation of order, delivery "ex warehouse" or "ex works" shall be deemed to have been agreed upon, that is EXW Oyten (Incoterms 2010).
- We shall not accept returns of transport or any other packaging with the exception of pallets. The Customer has the option of having our packaging material disposed of on the basis of our Agreement with Interseher.
- We shall only conclude transport insurance if this is contractually agreed upon. The Customer shall bear the respective costs thereof.
- We shall be entitled to effect partial delivery on a reasonable scope.

§ 9 General rules in the event of defects in the object of purchase

- All rights of the Customer relating to defects shall be contingent upon the Customer having complied with its obligations to examine the goods and to issue complaints as set out in § 377 of the German Commercial Code.
- Advertising statements made by third parties shall only be binding on us if such are approved by the manufacturer or ourselves.
- If we or the manufacturer do not follow operating or maintenance instructions, undertake changes in the products, replace parts or use expendable material which does not conform to the original specifications, warranty shall cease if the Customer does not refute a substantiated allegation that such defect was actually caused by one of said circumstances.
- Our terms of guarantee do apply.

§ 10 Subsequent performance

- If the object is defective, the Customer shall at first merely be entitled to demand subsequent performance on our part if it is not unreasonable to expect such subsequent performance of us or we have seriously and permanently rejected such.
- Subsequent performance can also be in the form of repeated delivery of the object or rectification of the defects (repair) by ourselves or third parties hired by ourselves. We shall be respectively obligated to bear all expenses required for the purpose of rectifying defect, in particular transport, travel, labour and material costs, if these would not increase as a result of the object of purchase being brought to a location other than the place of performance.
- We shall be able to select among the various types of subsequent performance as we see fit (§ 315 of the German Civil Code). In any case we shall be entitled to refuse a type of subsequent performance selected by the Customer if the other respective type of subsequent performance causes 15% lower costs for us. The remaining residual value of the object to be returned in the event of a new object being delivered is to be credited.
- We shall be entitled to make subsequent performance contingent upon a reasonable part of the purchase price having been paid. We shall also be entitled to refuse subsequent performance on the whole if the costs of such exceed the stipulated purchase price. If we are responsible for the defect or have assumed a guarantee for the absence of the defect, we may only refuse subsequent performance if such is not possible or if the costs of such exceed the stipulated purchase price by one-third or more. The remaining residual value of the object returned shall be credited if a new object is delivered.
- Any and all subsequent performance on our part shall be performed by ourselves without recognition of any legal obligation unless we have expressly recognized the defect. Our technicians or installers are not entitled to recognise defects.
- If a concrete object is subject of this Agreement, we shall be entitled to repair such if it is possible for us to repair such

ourselves or by hiring a third party. We shall also be entitled to supply an object other than the one supplied if this is just as well suited for the purposes of the purchaser which are the subject of the Agreement as the stipulated object. If used objects are the subject of this Agreement, the Customer shall be obligated to inspect such for recognisable defects immediately. If the Customer fails to provide notification of such defects within 3 weeks after transfer, all rights on the part of the Customer regarding recognisable defects shall be excluded unless the Customer demonstrates that the defects were already present upon the transfer of the objects.

§ 11 Further rights in the event of defects

- If subsequent performance as set out in § 440 of the German Civil Code fails, the Customer may make use of the rights emanating from § 437 subsection 2 of the German Civil Code (withdrawal or reduction in the purchase price) or § 437 subsection 3 of the German Civil Code (damages) as the Customer sees fit if the statutory preconditions for such have been met and in conformity with the stipulations of § 10, § 11, § 12 and § 13 of these General Sales Terms and Conditions.
- In the event of insignificant defects in the objects, the Customer shall not be entitled to demand damages as set out in § 280 section 1 of the German Civil Code. The right to reduce the purchase price shall also be excluded in the event of insignificant defects.

§ 12 Statute of limitation on rights relating to defects

- The rights of the Customer in connection with defects in the object shall expire in five years beginning with the delivery of the object. This shall also apply to the rights of the Customer to damages or damages instead of performance, including as a result of all damage to other legal goods of the Customer which come about as a result of such defect unless such involves personal injury on the part of the Customer or we are responsible for the defect as a result of wilful intent or gross negligence.
- If rights are also the subject of this Agreement, the statute of limitations for claims for defects on the part of the Customer shall commence with the Agreement of the parties to the Agreement upon the transfer of these rights to the Customer.

§ 13 Withdrawal and damages instead of performance as a result of the violation of the Agreement

- A deadline set by the Customer for subsequent performance must be at least 14 days if the subsequent performance must not take place in a shorter amount of time for special reasons.
- The Customer shall also only have the right to withdraw from the Agreement or demand damages instead of performance if a reasonable grace period expires without our compliance if the Customer announced such when setting the grace period or another reasonable period in advance.
- If the Customer sets a deadline for subsequent performance several times, the Customer shall not be entitled during this period to withdraw from the Agreement or demand damages instead of performance.

§ 14 Return of flawless goods

- Returns and/or exchange of flawless goods shall only be possible if we have expressly agreed to such. There shall be no legal obligation to accept returns. Returns and consignments sent back for exchange must be shipped at the expense of the Customer including any freight costs paid in advance by ourselves to our business address as quickly as possible and state the delivery note or invoice number. The Customer shall bear the risk until we accept such shipment. We shall be entitled to charge the costs of taking such goods into the warehouse or to reject the return. The minimum net processing fee for returns of goods is € 50.00. If special expenses are necessary in order to identify the goods which have been returned or to put such in a perfect condition (repairs, cleaning, etc.), we shall be entitled to charge the Customer for such costs.
- The Customer is obliged to advise of goods to be returned. If this duty is neglected, the Customer will be liable for any loss. We reserve the right to return any unannounced redelivery untreated and freight forward or to refuse its receipt.

§ 15 Liability

- We shall not be liable for slightly negligent violations of obligations if these do not involve important contractual obligations or we have assumed a guarantee for the performance of this obligation or for absence of success resulting from such violation of an obligation. This shall also apply accordingly to respective actions on the part of our institutions and third parties we hire to carry out an Agreement.
- This exclusion of liability shall not apply if the damages involve personal injury or claims emanating from the product Liability Act (Produkthaftungsgesetz).
- We have a third-party liability and product liability insurance policy. If coverage applies, the exclusion of liability set out in section 1 of these articles shall not apply if the claim to damages is limited to a maximum of € 1,500,000 in each individual case.
- Any and all claims to damages on the part of the Customer emanating from a grossly negligent violation of an obligation or a grossly negligent unlawful act on our part shall be limited to the damage which is foreseeable for us.
- Sections 1 to 4 of these articles shall apply accordingly to unlawful acts on the part of our employees and parties we hire to carry out the Agreement.

§ 16 Securing retention of title to ownership

- We shall retain the title to the object of purchase until all payments emanating from the delivery Agreement have been received. In the event of conduct on the part of the Customer in violation of the Agreement, in particular if the Customer falls into arrears on payment, we shall be entitled to take back the object of purchase after the expiry of a grace period (if this cannot be dispensed with by law). If we take back the object of purchase, this shall constitute withdrawal from the Agreement. We shall be entitled after taking back the object of purchase to dispose of such. The revenue from the sale of such shall be credited to the amounts owed by the Customer - minus a reasonable amount for the costs associated with the sale of such.
- The Customer shall be obligated to treat the object of purchase with due care. In particular the Customer shall be obligated to insure such at its own expense against fire, water and theft at its new value. If maintenance and inspection work is required, the Customer shall carry out such in due time at its own expense.
- The Customer shall notify us in writing without undue delay in the event of levies of execution or impingements by third parties so that we can file suit in accordance with § 771 of the Civil procedure Code (ZPO). If the third party is unable to reimburse the court or out-of-court costs in accordance with § 771 of the Civil procedure Code, the Customer shall be liable for the loss which we incur.
- The Customer shall be entitled to resell the object of purchase in the framework of normal business. The Customer herewith assigns all amounts receivable to the amount of the final invoice (including VAT) of our receivable to us here and now which accrue to the Customer from resale to the customers of the Customer or third parties, regardless of whether the object of purchase has been resold without or following processing. The Customer shall also remain entitled to collect this receivable after such assignment. This shall not affect our right to collect such receivable ourselves. We shall be obligated, however, to refrain from collecting the receivable if the Customer meets its payment obligations emanating from the revenue it has received, does not fall into arrears on payments and in particular no petition is filed to open a debt composition proceedings or insolvency proceedings or payments have been discontinued. If such is the case, however, we may demand that the Customer inform us as to the receivables which have been assigned and their debtor and provides us with all the information required to collect such receivables, provide us with the documents relating thereto and notify the debtor (third party) of such assignment.
- The processing or alteration of the object of purchase by the Customer shall always be performed on our behalf. If the object of purchase is processed with other objects which do not belong to us, we shall acquire co-ownership of the new object in the ratio of the value of the object of purchase (final invoice amount including VAT) to the other objects processed at the time of such processing. In addition, the same shall apply to the object which comes about through processing as for the object of purchase to which we retain title.
- If the object of purchase is inseparably mixed together with other objects which do not belong to us, we shall acquire co-ownership of the object in the ratio of the value of the object of purchase (final invoice amount including VAT) to the other objects mixed into such at the point in time such were mixed together. If the objects are mixed together in such a manner that the object of the Customer must be deemed to constitute the main object, it shall be deemed to have been agreed that the Customer transfers co-ownership of the same portion to us. The Customer shall hold the object to which we have sole title or partial title in safekeeping on our behalf.
- The Customer shall also assign to us the receivables used to secure our receivables in the form of collateral against the Customer which come about through the linkage of the object of purchase with a property against a third party.
- We shall be obligated to release the collateral upon the request of the Customer if the realisable value of the collateral exceeds the receivables which have been secured by more than 10%. We shall be free to select the collateral to be turned over as we see fit.

§ 17 Legal venue - place of performance - data protection

- If the Customer is a registered sole trader, the legal venue shall be our registered offices. We shall be entitled, however, to file suit against the Customer with the court having jurisdiction over the residence or business domicile of the Customer.
- In the event of cross-border deliveries - if the Customer is a registered sole trader in the meaning of the German Commercial Code (Handelsgesetzbuch) - the exclusive legal venue for disputes emanating directly or indirectly from this contractual relationship shall be Oyten, Federal Republic of Germany. We shall be entitled, however, to file suit against the Customer at any other court which has jurisdiction as a result of the European Legal Venue and Enforcement Regulation (Europäische Gerichtsstands- und Vollstreckungsverordnung - EuGVVO) or under any other legal provisions and international agreements.
- If the Customer is a consumer, the statutory legal venue shall apply. The court having jurisdiction over our registered offices shall also have jurisdiction in addition, however, if the consumer has an unknown residence or moves abroad following conclusion of the Agreement.
- If nothing is stipulated to the contrary in the confirmation of order, our registered offices shall be deemed to be the place of performance.
- Solely law governing the legal relationship between domestic parties at our registered offices (German law) shall apply to all legal relations between ourselves and the Customer emanating from this Agreement. Foreign law shall be excluded. The United Nations Convention on Contracts for the International Sale of Goods (CISG) shall be excluded.
- We note that the data required for the proper execution of business shall be saved in accordance with the German Federal Data-protection Act (Bundesdatenschutzgesetz).

Oyten, Germany, December 2013

Terms of redemption

Requirements:

1. Redemption max. until 6 month after purchase date.
2. Redelivery "franco domicile" to DOYMA.
3. Impeccable state of goods.

Conditions:

1. Redemption **has to be declared** and DOYMA has to confirm in written form.
2. Freight costs paid in advance by DOYMA will apply.
3. Specifying the VAT number.

Allowance:

The cost of goods handling, quality control, after-care to a small extent, and the restoration of merchantability in current form, packaging, etc. will be paid on a warehouse uptake value (minimum amount of stock taking). The listed costs are for the standard versions of the particular products.

Products:

- Curaflex® A, C, 3000	up to 350 ND	25 %*
A, C, 3000	up to 500 ND	35 %*
A, C, 3000	> ND 500	40 %*
		*) electro-galvanized yellow passivated, standard sizes, standard length
- Curaline®		35 %
- Curaflam®		35 %

No redemption:

- principally: without number of delivery note or order confirmation or invoice
- of Curaflex® gasket insert useable for several pipes or cables
- of Curaline® angled sleeve / Curaline® KSS cable duct systems
- of Curaflex® pipe sleeve in split form
- of custom-made products
- of base primer and other accessories
- of all other not mentioned types and dimensions

Subject to change.

Effective from 01.01.2014



Our head office export team at your service:



Stefan Hahn
Export-Manager
Fon: +49 (0)160 90762393
stefan.hahn@doyma.de



Rolf Stamer
Fon: +49 (0)4207 9166-570
rolf.stamer@doyma.de



Michael Buttler
Fon: +49 (0)4207 9166-330
michael.buttler@doyma.de



Andreas Hoffmann
Fon: +49 (0)4207 9166-590
andreas.hoffmann@doyma.de



Jörg Matschulat
Fon: +49 (0)4207 9166-580
joerg.matschulat@doyma.de

Your contact partner worldwide!

United Kingdom

**DOYMA UK
Ltd. Sealing systems**
p.O.Box 2287
Watford WD18 1JR

Registered address
Heathrow Business Centre
65, High Street
Egham, Surrey, TW20 9EY

Tel: 0044 1923 228144
Fax: 0044 1923 201780
www.doyma.co.uk
info@doyma.co.uk

Germany

**DOYMA GmbH & Co
DICHTUNGSSYSTEME
BRANDSCHUTZSYSTEME**
Industriestr. 43-57
28876 Oyten

Fon: 0049 4207 9166-550
Fax: 0049 4207 9166-199
www.doyma.de
info@doyma.de

Austria

**DOYMA GmbH & Co
DICHTUNGSSYSTEME
BRANDSCHUTZSYSTEME**
Perfektastr. 61 Objekt 3 / Top 2
1230 Vienna

Fon: 0043 1 698 1388-0
Fax: 0043 1 698 1388-99
www.doyma.at
info@doyma.at